

**My Account**

[Login](#)  
[Create Account](#)

**Resources**

[View All \(813\)](#)  
[Adenoviruses \(137\)](#)  
[Antibodies \(175\)](#)  
[Bioimages \(67\)](#)  
[Genomics Studies \(145\)](#)  
[mESC Lines \(68\)](#)  
[Mouse Strains \(120\)](#)  
[Miscellaneous \(46\)](#)  
[Protocols \(55\)](#)  
[Research Data \(4\)](#)  
[Resource Tags \(389\)](#)  
[Visualization \(9\)](#)

**Research & Cores**

[Core Facilities \(5\)](#)  
[Research Highlights \(5\)](#)  
[Research Networks](#)  
[Research Objectives](#)

**Information**

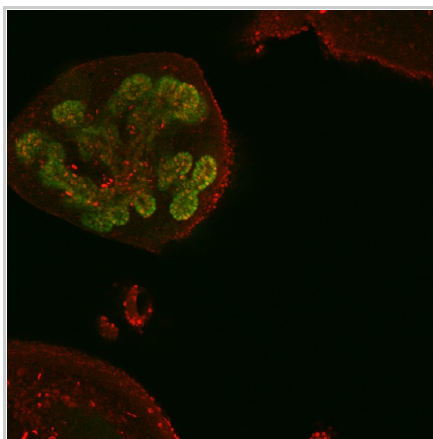
[About the BCBC](#)  
[BCBC Events](#)  
[Branding & Logos](#)  
[Career Opportunities](#)  
[Health](#)  
[NIH hESC Registry](#)  
[Policies & Guidelines](#)  
[Member Publications](#)  
[Research Programs](#)  
[Research Investigators](#)  
[Member Directory](#)  
[Tutorials](#)

**Polyclonal Human Cleaved Notch1 raised in Rabbit - Antibody RES1163****Antibody Information**

<b>Antibody ID:</b>	AB2555
<b>Antigen:</b>	Cleaved Notch1 (NCBI Gene ID: <a href="#">4851</a> )
<b>Type:</b>	Polyclonal
<b>Isotype:</b>	Not Applicable
<b>Immunogen Source:</b>	Peptide
<b>Raised In:</b>	Rabbit
<b>Peptide:</b>	peptide corresponding to sequence at Val1744 cleavage site
<b>Source of Antigen:</b>	Human
<b>Cross Reacts With:</b>	Mouse,Rat,Human
<b>Affinity Purified:</b>	Affinity Purified
<b>Purity Details:</b>	<i>Not provided</i>
<b>Positive Control:</b>	<i>Not provided</i>
<b>Notes:</b>	<i>Not provided</i>

**Applications and Uses**

Application	Concentration	Storage Buffer	Protocols and Description
IHC	<i>Not provided</i>	1:100	Description: Wholemout immunofluorescence as described in Ahnfelt-Ronne et al., 2007, J Histochem and cytochem: 55(9): 925-930. Notch staining requires Heating in a boiling waterbath in 10mM citrate buffer, pH6 for 1 hour. Performed after Dent????s bleach treatment in our standard protocol Protocols:


**Associated Images****Image 1****Description:**

Wholemount immunofluorescence of mouse e13.5 (optical section). Rb anti cleaved Notch1 1:100 with Cy3 TSA costained with goat anti Pdx1 Cy2 green.


**Reference:**

Jonas Ahnfelt-Rønne, Hagedorn Research Institute

**Access Status**

 This resource is publicly viewable.

**Request this Resource**

 Request from a repository


Primary contributor: [Antibody Core \(Retired\)](#)


Co-contributed by:

- [Antibody Core \(USA\)](#)

**Resource Tags**

antibody, Cleaved Notch1, Human, Polyclonal

 Login to edit tags

 Read more about tags

**Resource History & Actions**

Approved on  
Last modified on Mar 09, 2009

 Login to edit or request an edit

**Related resources****BCBC**

*No matching resources*

**Other Consortia**

*No matching resources*

Data courtesy of [dkCOIN](#). Only public resources are displayed.

**Repositories****Cell Signaling**

 Request via [www.cellsignal.com](http://www.cellsignal.com) website

Stock #: #2421

Availability Notes: *Not provided*

**Contact Information**

Preferred Contact

<b>Name</b>	Cell Signaling Technology
<b>Institution</b>	<i>Not provided</i>
<b>Phone</b>	978.867.2300
<b>Email</b>	<a href="mailto:sales@cellsignal.com">sales@cellsignal.com</a>

### Associated Publications

Publication	Citation
<a href="#">22096075</a>	Ahnfelt-Rønne J, Jørgensen MC, Klinck R, Jensen JN, Füchtbauer EM, Deering T, MacDonald RJ, Wright CV, Madsen OD, Serup P <a href="#">Ptf1a-mediated control of Dll1 reveals an alternative to the lateral inhibition mechanism.</a> (2012) <i>Development</i> <b>139</b> : 33-45 (Added November 29, 2012)

### Comments

*There are no comments for this entry.*

