

**My Account**

[Login](#)  
[Create Account](#)

**Resources**

[View All \(813\)](#)  
[Adenoviruses \(137\)](#)  
[Antibodies \(175\)](#)  
[Bioimages \(67\)](#)  
[Genomics Studies \(145\)](#)  
[mESC Lines \(68\)](#)  
[Mouse Strains \(120\)](#)  
[Miscellaneous \(46\)](#)  
[Protocols \(55\)](#)  
[Research Data \(4\)](#)  
[Resource Tags \(389\)](#)  
[Visualization \(9\)](#)

**Research & Cores**

[Core Facilities \(5\)](#)  
[Research Highlights \(5\)](#)  
[Research Networks](#)  
[Research Objectives](#)

**Information**

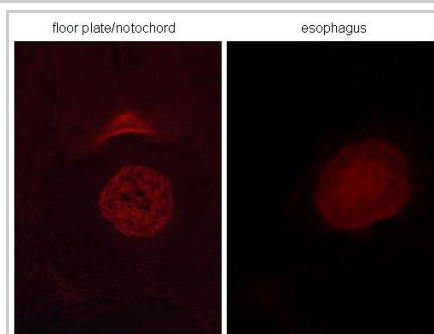
[About the BCBC](#)  
[BCBC Events](#)  
[Branding & Logos](#)  
[Career Opportunities](#)  
[Health](#)  
[NIH hESC Registry](#)  
[Policies & Guidelines](#)  
[Member Publications](#)  
[Research Programs](#)  
[Research Investigators](#)  
[Member Directory](#)  
[Tutorials](#)

**Monoclonal Rat Shh raised in Mouse - Antibody RES2222****Antibody Information**

<b>Antibody ID:</b>	AB2734
<b>Antigen:</b>	Shh (NCBI Gene ID: <a href="#">29499</a> )
<b>Type:</b>	Monoclonal
<b>Isotype:</b>	IgG1
<b>Immunogen Source:</b>	Purified Protein
<b>Raised In:</b>	Mouse
<b>Peptide:</b>	<i>Not provided</i>
<b>Source of Antigen:</b>	Rat
<b>Cross Reacts With:</b>	Mouse,Rat
<b>Affinity Purified:</b>	Supernatant
<b>Purity Details:</b>	<i>Not provided</i>
<b>Positive Control:</b>	<i>Not provided</i>
<b>Notes:</b>	<i>Not provided</i>

**Applications and Uses**


Application	Concentration	Storage Buffer	Protocols and Description
IHC	1:100	<i>Not provided</i>	Description: <i>Not provided</i> Protocols:

**Associated Images****Image 1**

**Description:**  
e4 chicken embryo SHH 5e1

**Reference:**  
Jonas Ahnfelt-Ronne,  
Hagedorn Research Institute

**Repositories****DSHB - Madsen**

 Request via [dshb.biology.uiowa.edu/Welcome?search=madsen](https://dshb.biology.uiowa.edu/Welcome?search=madsen) website

**Stock #:** 5E1  
**Availability Notes:** *Not provided*


**Contact Information****Preferred Contact**

<b>Name</b>	Ole Madsen
<b>Institution</b>	Hagedorn Research Institute
<b>Phone</b>	+45 4443 9197
<b>Email</b>	<a href="mailto:odm@hagedorn.dk">odm@hagedorn.dk</a>

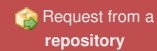
**Associated Publications**

Publication	Citation
-------------	----------

**Access Status**

 This resource is publicly viewable.

**Request this Resource**

 Request from a  
repository

Primary contributor: [Antibody Core \(Retired\)](#)  
 Co-contributed by:  

- [Antibody Core \(USA\)](#)

**Resource Tags**


antibody, Monoclonal, Rat, Shh

 [Login to edit tags](#)

 [Read more about tags](#)

**Resource History & Actions**

Approved on  
 Last modified on Apr 17, 2015

 [Login to edit or request an edit](#)

**Related resources****BCBC**

*No matching resources*

**Other Consortia**

*No matching resources*

Data courtesy of [dkCOIN](#). Only public resources are displayed.

- [15464286](#) Ju MJ, Aroca P, Luo J, Puelles L, Redies C Molecular profiling indicates avian branchiomotor nuclei invade the hindbrain alar plate. (2004) *Neuroscience* **128**: 785-96 (Added November 05, 2010)
- [11336495](#) Zhang XM, Yang XJ Temporal and spatial effects of Sonic hedgehog signaling in chick eye morphogenesis. (2001) *Dev Biol* **233**: 271-90 (Added November 05, 2010)
- [10981962](#) Outram SV, Varas A, Pepicelli CV, Crompton T Hedgehog signaling regulates differentiation from double-negative to double-positive thymocyte. (2000) *Immunity* **13**: 187-97 (Added November 05, 2010)
- [8929535](#) Ericson J, Morton S, Kawakami A, Roelink H, Jessell TM Two critical periods of Sonic Hedgehog signaling required for the specification of motor neuron identity. (1996) *Cell* **87**: 661-73 (Added November 09, 2010)

## Comments

There are no comments for this entry.



[Home](#) · [Your Account](#) · [News & Events](#) · [Resources](#) · [Policies & Guidelines](#) · [About Us](#) · [FAQ](#) · [Site Map](#)

© 2002-2015 Beta Cell Biology Consortium - All Rights Reserved. [Terms of usage and disclaimer.](#)

