

**My Account**

[Login](#)  
[Create Account](#)

**Resources**

[View All \(813\)](#)  
[Adenoviruses \(137\)](#)  
[Antibodies \(175\)](#)  
[Bioimages \(67\)](#)  
[Genomics Studies \(145\)](#)  
[mESC Lines \(68\)](#)  
[Mouse Strains \(120\)](#)  
[Miscellaneous \(46\)](#)  
[Protocols \(55\)](#)  
[Research Data \(4\)](#)  
[Resource Tags \(389\)](#)  
[Visualization \(9\)](#)

**Research & Cores**

[Core Facilities \(5\)](#)  
[Research Highlights \(5\)](#)  
[Research Networks](#)  
[Research Objectives](#)

**Information**

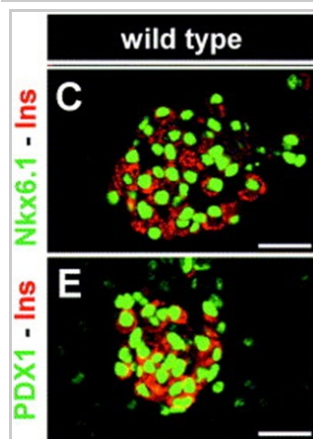
[About the BCBC](#)  
[BCBC Events](#)  
[Branding & Logos](#)  
[Career Opportunities](#)  
[Health](#)  
[NIH hESC Registry](#)  
[Policies & Guidelines](#)  
[Member Publications](#)  
[Research Programs](#)  
[Research Investigators](#)  
[Member Directory](#)  
[Tutorials](#)

**Monoclonal Human Insulin raised in Mouse - Antibody RES270****Antibody Information**

|                    |   |
|--------------------|---|
| Antibody ID:       | AB1061  |
| Antigen:           | Insulin (NCBI Gene ID: <a href="#">3630</a> ) |
| Type:              | Monoclonal                                    |
| Isotype:           | IgG1  |
| Immunogen Source:  | Peptide                                       |
| Raised In:         | Mouse   |
| Peptide:           | <i>Not provided</i>                           |
| Source of Antigen: | Human   |
| Cross Reacts With: | Mouse,Rat,Human                               |
| Affinity Purified: | Affinity Purified                             |
| Purity Details:    | <i>Not provided</i>                           |
| Positive Control:  | Pancreas tissue any age                       |
| Notes:             | <i>Not provided</i>                           |

**Applications and Uses**


| Application | Concentration | Storage Buffer | Protocols and Description   |
|-------------|---------------|----------------|---|
| IHC         | 1:100         | PBS with azide | Description: <i>Not provided</i><br>Protocols:<br><i>Not provided</i>             |
| IHC         | 1:500         | PBS with azide | Description: <i>Not provided</i><br>Protocols:<br>1. <a href="#">Peroxidase</a>   |
| IHC-Fr      | 1:100         | PBS with azide | Description: <i>Not provided</i><br>Protocols:<br><i>Not provided</i>             |
| IHC-P       | 1:100         | PBS with azide | Description: <i>Not provided</i><br>Protocols:<br>1. <a href="#">Fluorescence</a> |

**Associated Images****Image 1****Description:**


Endocrine cell phenotype analysis in the rudimentary pancreas (e18.5).

**Reference:**  
 12921743

**Access Status**

 This resource is publicly viewable.

**Request this Resource**

 Request from a repository

Primary contributor: [Antibody Core](#)


(Retired)


Co-contributed by:

- [Antibody Core \(USA\)](#)

**Resource Tags**


AbCore, antibody, Human, Insulin, Monoclonal

 Login to edit tags

 Read more about tags

**Resource History & Actions**

Approved on  
 Last modified on May 07, 2013

 Login to edit or request an edit

**Related resources****BCBC**

*No matching resources*

**Other Consortia**

*No matching resources*

Data courtesy of [dkCOIN](#). Only public resources are displayed.

**Repositories**

BCBC members may [Login](#) to request this resource.

BCBC members may [Login](#) to request this resource.

## Contact Information

### Preferred Contact

|             |  |
|-------------|--|
| Name        | Michael Ray  |
| Institution | Vanderbilt University  |
| Phone       | (615)343-8258  |
| Email       | <a href="mailto:michael.ray@vanderbilt.edu">michael.ray@vanderbilt.edu</a> |


## Associated Publications

### Publication Citation

[12921743](#) Hald J, Hjorth JP, German MS, Madsen OD, Serup P, Jensen J. [Activated Notch1 prevents differentiation of pancreatic acinar cells and attenuate endocrine development.](#) (2003) *Dev Biol* **260**: 426-37 (Added May 07, 2013)

## Comments

There are no comments for this entry.

 [Login to add comments](#)

[Home](#) · [Your Account](#) · [News & Events](#) · [Resources](#) · [Policies & Guidelines](#) · [About Us](#) · [FAQ](#) · [Site Map](#)

© 2002-2015 Beta Cell Biology Consortium - All Rights Reserved. [Terms of usage and disclaimer.](#)

