

My Account

[Login](#)
[Create Account](#)

Resources

[View All \(813\)](#)
[Adenoviruses \(137\)](#)
[Antibodies \(175\)](#)
[Bioimages \(67\)](#)
[Genomics Studies \(145\)](#)
[mESC Lines \(68\)](#)
[Mouse Strains \(120\)](#)
[Miscellaneous \(46\)](#)
[Protocols \(55\)](#)
[Research Data \(4\)](#)
[Resource Tags \(389\)](#)
[Visualization \(9\)](#)

Research & Cores

[Core Facilities \(5\)](#)
[Research Highlights \(5\)](#)
[Research Networks](#)
[Research Objectives](#)

Information

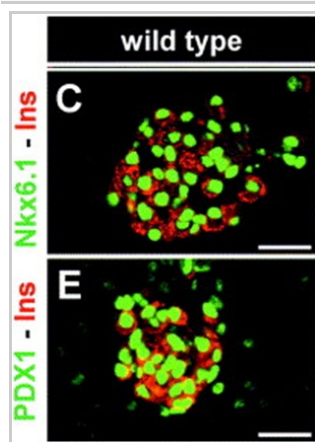
[About the BCBC](#)
[BCBC Events](#)
[Branding & Logos](#)
[Career Opportunities](#)
[Health](#)
[NIH hESC Registry](#)
[Policies & Guidelines](#)
[Member Publications](#)
[Research Programs](#)
[Research Investigators](#)
[Member Directory](#)
[Tutorials](#)

Polyclonal Rat PDX1 raised in Rabbit - Antibody RES272**Antibody Information**

| | |
|---------------------------|---|
| Antibody ID: | AB1068 |
| Antigen: | PDX1 (NCBI Gene ID: 29535) |
| Type: | Polyclonal |
| Isotype: | Not Applicable |
| Immunogen Source: | Fusion Protein |
| Raised In: | Rabbit |
| Peptide: | <i>Not provided</i> |
| Source of Antigen: | Rat |
| Cross Reacts With: | Mouse,Rat,Human |
| Affinity Purified: | Serum |
| Purity Details: | <i>Not provided</i> |
| Positive Control: | Pancreas tissue any age |
| Notes: | <i>Not provided</i> |

Applications and Uses

| Application | Concentration | Storage Buffer | Protocols and Description |
|-------------|---------------|----------------|---|
| IHC-Fr | 1:8000 TSA | PBS with azide | Description: Using TSA amplification Protocols: <i>Not provided</i> |
| IHC-P | 1:8000 TSA | PBS plus azide | Description: Using TSA amplification Protocols: 1. TSA Protocol |
| IHC | 1:8000 TSA | PBS with azide | Description: Using TSA amplification Protocols: 1. Fluorescence |


Associated Images**Image 1****Description:**

From Hald et al. 2003

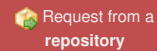
Reference:

Not provided

Access Status

 This resource is publicly viewable.

Request this Resource

 Request from a repository

Primary contributor: [Antibody Core](#)

(Retired)

Co-contributed by:

- [Antibody Core \(USA\)](#)

Resource Tags

AbCore, antibody, PDX1, Polyclonal, Rat

 Login to edit tags

 Read more about tags

Resource History & Actions

Approved on

Last modified on May 15, 2013

 Login to edit or request an edit

Related resources**BCBC**

No matching resources

Other Consortia

No matching resources

Data courtesy of [dkCOIN](#). Only public resources are displayed.

Repositories

BCBC members may [Login](#) to request this resource.

BCBC members may [Login](#) to request this resource.



Contact Information


| Preferred Contact | |
|-------------------|--|
| Name | Michael Ray |
| Institution | Vanderbilt University |
| Phone | (615)343-8258 |
| Email | michael.ray@vanderbilt.edu |

Associated Publications

| Publication | Citation |
|--------------------------|---|
| 12921743 | Hald J, Hjorth JP, German MS, Madsen OD, Serup P, Jensen J. Activated Notch1 prevents differentiation of pancreatic acinar cells and attenuate endocrine development. (2003) <i>Dev Biol</i> 260 : 426-37 (Added May 15, 2013) |

Comments

| | | |
|---|--|---|
|  | 03/29/2005 06:57 AM Inger Lund Pedersen | For E14.5d mouse pancreas, IF-TSA (from Molecular Probes) 1:8,000 dilution optimal; conventional IF not tested. Detects only the highly expressing cells; no PDX1 detected in the remaining precursor epithelium and nascent acini. |
|  | 01/12/2005 10:22 AM Inger Lund Pedersen | IHC on adult mouse pancreas. TSA (from Molecular Probes) dilution optimal 1:8,000. IF not tested. Detects only the highly expressing cells; no PDX1 detected in the remaining precursor epithelium and nascent acini. |

 Login to add comments

[Home](#) · [Your Account](#) · [News & Events](#) · [Resources](#) · [Policies & Guidelines](#) · [About Us](#) · [FAQ](#) · [Site Map](#)

© 2002-2015 Beta Cell Biology Consortium - All Rights Reserved. [Terms of usage and disclaimer.](#)

