

My Account

[Login](#)
[Create Account](#)

Resources

[View All \(813\)](#)
[Adenoviruses \(137\)](#)
[Antibodies \(175\)](#)
[Bioimages \(67\)](#)
[Genomics Studies \(145\)](#)
[mESC Lines \(68\)](#)
[Mouse Strains \(120\)](#)
[Miscellaneous \(46\)](#)
[Protocols \(55\)](#)
[Research Data \(4\)](#)
[Resource Tags \(389\)](#)
[Visualization \(9\)](#)

Research & Cores

[Core Facilities \(5\)](#)
[Research Highlights \(5\)](#)
[Research Networks](#)
[Research Objectives](#)

Information

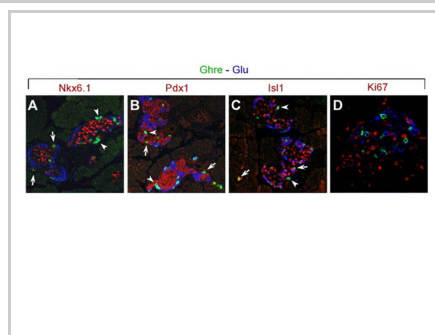
[About the BCBC](#)
[BCBC Events](#)
[Branding & Logos](#)
[Career Opportunities](#)
[Health](#)
[NIH hESC Registry](#)
[Policies & Guidelines](#)
[Member Publications](#)
[Research Programs](#)
[Research Investigators](#)
[Member Directory](#)
[Tutorials](#)

Polyclonal Human ghrelin raised in Goat - Antibody RES275**Antibody Information**

Antibody ID:	AB1641
Antigen:	ghrelin (NCBI Gene ID: 51738)
Type:	Polyclonal
Isotype:	Not Applicable
Immunogen Source:	Peptide
Raised In:	Goat
Peptide:	<i>Not provided</i>
Source of Antigen:	Human
Cross Reacts With:	Mouse,Rat,Human
Affinity Purified:	Serum
Purity Details:	<i>Not provided</i>
Positive Control:	stomach tissue
Notes:	<i>Not provided</i>

Applications and Uses

Application	Concentration	Storage Buffer	Protocols and Description
IHC-P	1:500	PBS	Description: <i>Not provided</i> Protocols: 1. Fluorescence


Associated Images**Image 1****Description:**

Expression of ghrelin in e19 mouse islets.

Reference:

16122727

Repositories**Santa Cruz Biotechnology**


 Request via www.scbt.com
website

Stock #: SC-10368
Availability Notes: *Not provided*


Contact Information**Preferred Contact**

Name	Santa Cruz Biotechnology, Inc.
Institution	<i>Not provided</i>
Phone	214-902-3900
Email	scbt@scbt.com

Associated Publications**Access Status**

 This resource is publicly viewable.

Request this Resource

 Request from a
repository

Primary contributor: [Antibody Core](#)


(Retired)

Co-contributed by:

- [Antibody Core \(USA\)](#)

Resource Tags


antibody, ghrelin, Human, IHC, Polyclonal

 Login to edit tags

 Read more about tags

Resource History & Actions

Approved on
 Last modified on Oct 30, 2012

 Login to edit or request an edit

Related resources**BCBC**

No matching resources

Other Consortia

No matching resources

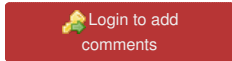
Data courtesy of [dkCOIN](#). Only public resources are displayed.

Publication Citation

[16122727](#) Heller RS, Jenny M, Collombat P, Mansouri A, Tomasetto C, Madsen OD, Mellitzer G, Gradwohl G, Serup P [Genetic determinants of pancreatic epsilon-cell development](#). (2005) *Dev Biol* **286**: 217-24 (Added October 30, 2012)

Comments

There is one comment awaiting approval.



[Home](#) · [Your Account](#) · [News & Events](#) · [Resources](#) · [Policies & Guidelines](#) · [About Us](#) · [FAQ](#) · [Site Map](#)

© 2002-2015 Beta Cell Biology Consortium - All Rights Reserved. [Terms of usage and disclaimer](#).

