

My Account

[Login](#)
[Create Account](#)

Resources

[View All \(813\)](#)
[Adenoviruses \(137\)](#)
[Antibodies \(175\)](#)
[Bioimages \(67\)](#)
[Genomics Studies \(145\)](#)
[mESC Lines \(68\)](#)
[Mouse Strains \(120\)](#)
[Miscellaneous \(46\)](#)
[Protocols \(55\)](#)
[Research Data \(4\)](#)
[Resource Tags \(389\)](#)
[Visualization \(9\)](#)

Research & Cores

[Core Facilities \(5\)](#)
[Research Highlights \(5\)](#)
[Research Networks](#)
[Research Objectives](#)

Information

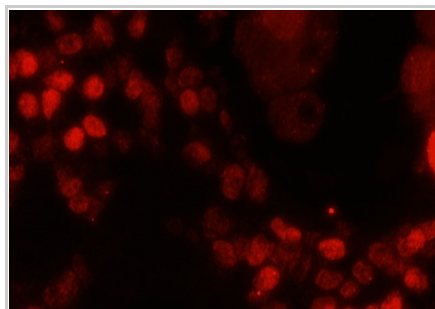
[About the BCBC](#)
[BCBC Events](#)
[Branding & Logos](#)
[Career Opportunities](#)
[Health](#)
[NIH hESC Registry](#)
[Policies & Guidelines](#)
[Member Publications](#)
[Research Programs](#)
[Research Investigators](#)
[Member Directory](#)
[Tutorials](#)

Polyclonal Mouse Pax6 raised in Rabbit - Antibody RES276**Antibody Information**

Antibody ID:	AB1642
Antigen:	Pax6 (NCBI Gene ID: 18508)
Type:	Polyclonal
Isotype:	Not Applicable
Immunogen Source:	Peptide
Raised In:	Rabbit
Peptide:	QVPGSEPMSQYWPRLQ
Source of Antigen:	Mouse
Cross Reacts With:	Mouse,Rat,Human
Affinity Purified:	Purified
Purity Details:	Tris buffered BSA
Positive Control:	Embryonic mouse pancreas
Notes:	Works best with microwave treatment. We have observed batch to batch differences from this company.

Applications and Uses

Application	Concentration	Storage Buffer	Protocols and Description
IHC-Fr	1:400	PBS	Description: <i>Not provided</i> Protocols: 1. Fluorescence
IHC-P	1:2000 TSA	PBS-TNB	Description: <i>Not provided</i> Protocols: 1. TSA Protocol

Associated Images**Image 1**

Description:
Embryonic E18 pancreas at 400x magnification. Visualized with donkey anti- rabbit Cy3.

Reference:
Not provided

Repositories**CRP Inc.**

[Request via www.crpinc.com website](#)

Stock #: PRB-278P
Availability Notes: 0.1ml size


Contact Information

Not provided


Associated Publications

No publications associated

Access Status

 This resource is publicly viewable.

Request this Resource

 Request from a repository

Primary contributor: [Antibody Core \(Retired\)](#)
 Co-contributed by:
 • [Antibody Core \(USA\)](#)

Resource Tags


antibody, Mouse, Pax6, pax6, Polyclonal

 Login to edit tags

 Read more about tags

Resource History & Actions

Approved on
 Last modified on Sep 22, 2003

 Login to edit or request an edit

Related resources**BCBC**

No matching resources


Other Consortia

No matching resources

Data courtesy of [dkCOIN](#). Only public resources are displayed.

Comments

There are no comments for this entry.

 Login to add
comments

[Home](#) · [Your Account](#) · [News & Events](#) · [Resources](#) · [Policies & Guidelines](#) · [About Us](#) · [FAQ](#) · [Site Map](#)

© 2002-2015 Beta Cell Biology Consortium - All Rights Reserved. [Terms of usage and disclaimer.](#)

