

My Account

[Login](#)
[Create Account](#)

Resources

[View All \(813\)](#)
[Adenoviruses \(137\)](#)
[Antibodies \(175\)](#)
[Bioimages \(67\)](#)
[Genomics Studies \(145\)](#)
[mESC Lines \(68\)](#)
[Mouse Strains \(120\)](#)
[Miscellaneous \(46\)](#)
[Protocols \(55\)](#)
[Research Data \(4\)](#)
[Resource Tags \(389\)](#)
[Visualization \(9\)](#)

Research & Cores

[Core Facilities \(5\)](#)
[Research Highlights \(5\)](#)
[Research Networks](#)
[Research Objectives](#)

Information

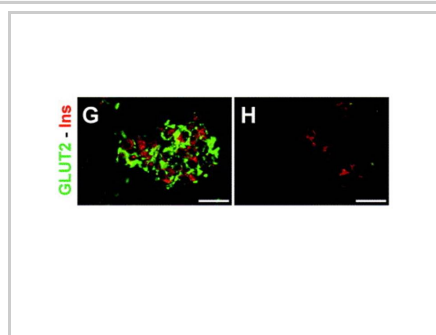
[About the BCBC](#)
[BCBC Events](#)
[Branding & Logos](#)
[Career Opportunities](#)
[Health](#)
[NIH hESC Registry](#)
[Policies & Guidelines](#)
[Member Publications](#)
[Research Programs](#)
[Research Investigators](#)
[Member Directory](#)
[Tutorials](#)

Polyclonal Rat Glut-2 raised in Rabbit - Antibody RES281**Antibody Information**

Antibody ID:	AB1662
Antigen:	Glut-2 (NCBI Gene ID: 25351)
Type:	Polyclonal
Isotype:	Not Applicable
Immunogen Source:	Peptide
Raised In:	Rabbit
Peptide:	<i>Not provided</i>
Source of Antigen:	Rat
Cross Reacts With:	Mouse, Rat, Human
Affinity Purified:	Serum
Purity Details:	50ul aliquot
Positive Control:	Adult Pancreas tissue
Notes:	<i>Not provided</i>

Applications and Uses

Application	Concentration	Storage Buffer	Protocols and Description
IHC	1:400	PBS	Description: <i>Not provided</i> Protocols: 1. Fluorescence
IHC	1:3000 TSA	PBS-TNB	Description: <i>Not provided</i> Protocols: 1. TSA Protocol

Associated Images**Image 1****Description:**

Insulin cell express GLUT2 in e18.5 wild type pancreas (G)

Reference:

12921743

Repositories**Chemicon**

[Request via www.chemicon.com/ website](#)


Stock #: AB1342

Availability Notes: *Not provided*

Contact Information**Preferred Contact**

Name	EMD Millipore
Institution	<i>Not provided</i>
Phone	(866) 645-5476
Email	NACustomerservice@emdmillipore.com

Access Status

 This resource is publicly viewable.

Request this Resource

[Request from a repository](#)

Primary contributor: [Antibody Core \(Retired\)](#)

Co-contributed by:

- [Antibody Core \(USA\)](#)

Resource Tags

antibody, Glut-2, Polyclonal, Project proliferating cell nuclear antigen, Rat

[Login to edit tags](#)

[Read more about tags](#)

Resource History & Actions

Approved on

Last modified on Oct 29, 2012

[Login to edit or request an edit](#)

Related resources**BCBC**

No matching resources

Other Consortia

No matching resources

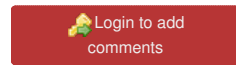
Data courtesy of [dkCOIN](#). Only public resources are displayed.

Associated Publications

Publication	Citation
12921743	Hald J, Hjorth JP, German MS, Madsen OD, Serup P, Jensen J. Activated Notch1 prevents differentiation of pancreatic acinar cells and attenuate endocrine development. (2003) <i>Dev Biol</i> 260 : 426-37 (Added May 07, 2013)

Comments

There are no comments for this entry.



[Home](#) · [Your Account](#) · [News & Events](#) · [Resources](#) · [Policies & Guidelines](#) · [About Us](#) · [FAQ](#) · [Site Map](#)

© 2002-2015 Beta Cell Biology Consortium - All Rights Reserved. [Terms of usage and disclaimer.](#)

