

My Account

[Login](#)
[Create Account](#)

Resources

[View All \(813\)](#)
[Adenoviruses \(137\)](#)
[Antibodies \(175\)](#)
[Bioimages \(67\)](#)
[Genomics Studies \(145\)](#)
[mESC Lines \(68\)](#)
[Mouse Strains \(120\)](#)
[Miscellaneous \(46\)](#)
[Protocols \(55\)](#)
[Research Data \(4\)](#)
[Resource Tags \(389\)](#)
[Visualization \(9\)](#)

Research & Cores

[Core Facilities \(5\)](#)
[Research Highlights \(5\)](#)
[Research Networks](#)
[Research Objectives](#)

Information

[About the BCBC](#)
[BCBC Events](#)
[Branding & Logos](#)
[Career Opportunities](#)
[Health](#)
[NIH hESC Registry](#)
[Policies & Guidelines](#)
[Member Publications](#)
[Research Programs](#)
[Research Investigators](#)
[Member Directory](#)
[Tutorials](#)

Polyclonal bovine Carboxypeptidase A raised in Rabbit - Antibody RES282**Antibody Information**

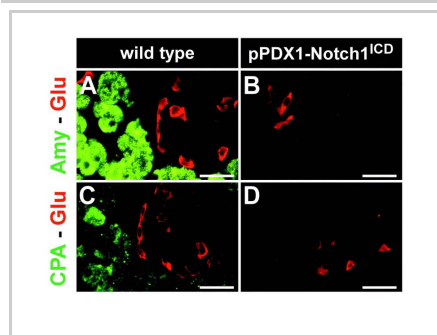
Antibody ID:	AB1663
Antigen:	Carboxypeptidase A (NCBI Gene ID: 286762)
Type:	Polyclonal
Isotype:	Not Applicable
Immunogen Source:	Purified Protein
Raised In:	Rabbit
Peptide:	<i>Not provided</i>
Source of Antigen:	bovine
Cross Reacts With:	Mouse,Rat
Affinity Purified:	Affinity Purified
Purity Details:	10mg/ml
Positive Control:	exocrine pancreas tissue
Notes:	<i>Not provided</i>

Applications and Uses

Application	Concentration	Storage Buffer	Protocols and Description
IHC	0.5ug/ml	PBS-TNB	Description: <i>Not provided</i> Protocols: 1. TSA Protocol

Associated Images

Image 1

**Description:**

Amylase and carboxypeptidase A are highly expressed in the exocrine pancreas at e18.5.

Reference:

12921743

Repositories

Anawa

[Request via www.anawa.ch website](#)


Stock #: 1810-0006
Availability Notes: *Not provided*

Contact Information

Preferred Contact

Name	Anawa
Institution	<i>Not provided</i>
Phone	+41 (044) 805 76 81
Email	contactus@anawa.ch

Associated Publications**Access Status**

 This resource is publicly viewable.

Request this Resource

[Request from a repository](#)

Primary contributor: [Antibody Core \(Retired\)](#)

Co-contributed by:

- [Antibody Core \(USA\)](#)

Resource Tags

antibody, bovine, Carboxypeptidase A, Polyclonal

[Login to edit tags](#)

[Read more about tags](#)

Resource History & Actions

Approved on
 Last modified on Oct 29, 2012

[Login to edit or request an edit](#)

Related resources**BCBC**

No matching resources

Other Consortia

No matching resources

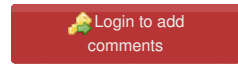
Data courtesy of [dkCOIN](#). Only public resources are displayed.

Publication Citation

12921743 Hald J, Hjorth JP, German MS, Madsen OD, Serup P, Jensen J [Activated Notch1 prevents differentiation of pancreatic acinar cells and attenuate endocrine development.](#) (2003) *Dev Biol* **260**: 426-37 (Added May 07, 2013)

Comments

There are no comments for this entry.



[Home](#) · [Your Account](#) · [News & Events](#) · [Resources](#) · [Policies & Guidelines](#) · [About Us](#) · [FAQ](#) · [Site Map](#)

© 2002-2015 Beta Cell Biology Consortium - All Rights Reserved. [Terms of usage and disclaimer.](#)

