

**My Account**

[Login](#)  
[Create Account](#)

**Resources**

[View All \(813\)](#)  
[Adenoviruses \(137\)](#)  
[Antibodies \(175\)](#)  
[Bioimages \(67\)](#)  
[Genomics Studies \(145\)](#)  
[mESC Lines \(68\)](#)  
[Mouse Strains \(120\)](#)  
[Miscellaneous \(46\)](#)  
[Protocols \(55\)](#)  
[Research Data \(4\)](#)  
[Resource Tags \(389\)](#)  
[Visualization \(9\)](#)

**Research & Cores**

[Core Facilities \(5\)](#)  
[Research Highlights \(5\)](#)  
[Research Networks](#)  
[Research Objectives](#)

**Information**

[About the BCBC](#)  
[BCBC Events](#)  
[Branding & Logos](#)  
[Career Opportunities](#)  
[Health](#)  
[NIH hESC Registry](#)  
[Policies & Guidelines](#)  
[Member Publications](#)  
[Research Programs](#)  
[Research Investigators](#)  
[Member Directory](#)  
[Tutorials](#)

**Polyclonal Rat ghrelin raised in Rabbit - Antibody RES289****Antibody Information**

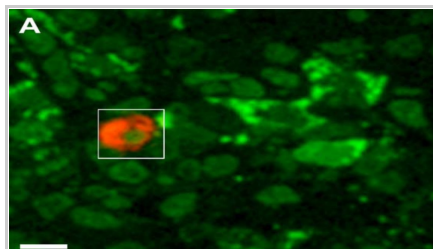
Antibody ID:	AB1701
Antigen:	ghrelin (NCBI Gene ID: <a href="#">59301</a> )
Type:	Polyclonal
Isotype:	Not Applicable
Immunogen Source:	Peptide
Raised In:	Rabbit
Peptide:	<i>Not provided</i>
Source of Antigen:	Rat
Cross Reacts With:	Mouse, Rat, Human
Affinity Purified:	Affinity Purified
Purity Details:	<i>Not provided</i>
Positive Control:	Rat stomach
Notes:	<i>Not provided</i>

**Applications and Uses**

Application	Concentration	Storage Buffer	Protocols and Description
IHC-P	1/400	Distilled water	Description: <i>Not provided</i> Protocols:

**Associated Images**

## Image 1

**Description:**

Fluorescence photomicrograph of semi-thin section of human fetal pancreas, double-immunostained for ghrelin (red) and glucagon (green).

**Reference:**

15668796

**Repositories****Phoenix Pharmaceuticals**

[Request via www.phoenixpeptide.com website](#)

Stock #: H-031-31

Availability Notes: *Not provided*


**Contact Information****Preferred Contact**

Name	Phoenix Pharmaceuticals, Inc.
Institution	<i>Not provided</i>
Phone	(650) 558-8898
Email	<a href="mailto:info@phoenixpeptide.com">info@phoenixpeptide.com</a>


**Associated Publications**

Publication	Citation
<a href="#">15668796</a>	Wierup N, Sundler F <a href="#">Ultrastructure of islet ghrelin cells in the human fetus.</a> (2005) <i>Cell Tissue Res</i> 319: 423-8 (Added May 13, 2013)

**Access Status**

 This resource is publicly viewable.

**Request this Resource**

 Request from a repository

Primary contributor: [Antibody Core \(Retired\)](#)


Co-contributed by:

- [Antibody Core \(USA\)](#)

**Resource Tags**

antibody, ghrelin, Polyclonal, Rat


 Login to edit tags

 Read more about tags

**Resource History & Actions**

Approved on

Last modified on May 07, 2013

 Login to edit or request an edit

**Related resources****BCBC**

*No matching resources*

**Other Consortia**

*No matching resources*

Data courtesy of [dkCOIN](#). Only public resources are displayed.

## Comments

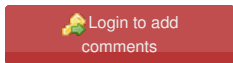
---



09/25/2003 04:32 PM  
[Bertrand Blondeau](#)

This antibody works fine with IF but has not been tested for IHC.

---



[Home](#) · [Your Account](#) · [News & Events](#) · [Resources](#) · [Policies & Guidelines](#) · [About Us](#) · [FAQ](#) · [Site Map](#)

© 2002-2015 Beta Cell Biology Consortium - All Rights Reserved. [Terms of usage and disclaimer.](#)

