

**My Account**

[Login](#)  
[Create Account](#)

**Resources**

[View All \(813\)](#)  
[Adenoviruses \(137\)](#)  
[Antibodies \(175\)](#)  
[Bioimages \(67\)](#)  
[Genomics Studies \(145\)](#)  
[mESC Lines \(68\)](#)  
[Mouse Strains \(120\)](#)  
[Miscellaneous \(46\)](#)  
[Protocols \(55\)](#)  
[Research Data \(4\)](#)  
[Resource Tags \(389\)](#)  
[Visualization \(9\)](#)

**Research & Cores**

[Core Facilities \(5\)](#)  
[Research Highlights \(5\)](#)  
[Research Networks](#)  
[Research Objectives](#)

**Information**

[About the BCBC](#)  
[BCBC Events](#)  
[Branding & Logos](#)  
[Career Opportunities](#)  
[Health](#)  
[NIH hESC Registry](#)  
[Policies & Guidelines](#)  
[Member Publications](#)  
[Research Programs](#)  
[Research Investigators](#)  
[Member Directory](#)  
[Tutorials](#)

**Polyclonal Mouse PDX1 raised in Chicken - Antibody RES294****Antibody Information**

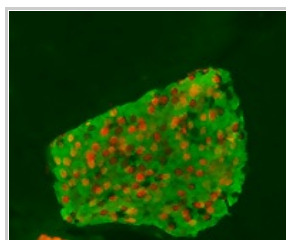
<b>Antibody ID:</b>	AB1983
<b>Antigen:</b>	PDX1 (NCBI Gene ID: <a href="#">18609</a> )
<b>Type:</b>	Polyclonal
<b>Isotype:</b>	Not Applicable
<b>Immunogen Source:</b>	Fusion Protein
<b>Raised In:</b>	Chicken
<b>Peptide:</b>	GST-PDX1 (aa205-aa284)
<b>Source of Antigen:</b>	Mouse
<b>Cross Reacts With:</b>	Mouse
<b>Affinity Purified:</b>	Purified
<b>Purity Details:</b>	IgY
<b>Positive Control:</b>	Mouse pancreas
<b>Notes:</b>	Donated by Dr. M. German, UCSF

**Applications and Uses**

Application	Concentration	Storage Buffer	Protocols and Description
IHC-P	1:500 - 1:1000	PBS (Ca/Mg free) with 0.1% Sodium Azide	Description: The dilutions are for use with Rabbit-anti Chicken Cy3 from Jackson as the secondary antibody Protocols: <ol style="list-style-type: none"> <li><a href="#">Immunofluorescence Protocol for Paraffin Sections</a></li> </ol>

**Associated Images**

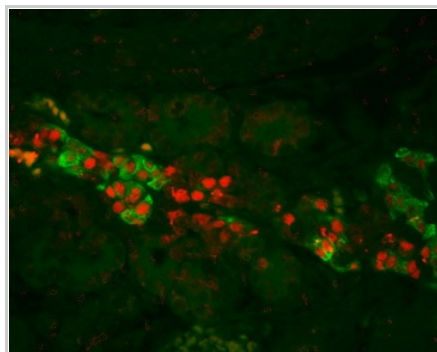
Image 1



**Description:**  
Not provided

**Reference:**  
Not provided

Image 2



**Description:**  
Not provided


**Reference:**  
Not provided

**Repositories**


BCBC members may [Login](#) to request this resource.

BCBC members may [Login](#) to request this resource.

**Access Status**

 This resource is publicly viewable.

**Request this Resource**


 Request from a repository


Primary contributor: [Antibody Core \(Retired\)](#)  
 Co-contributed by:
 

- [Antibody Core \(USA\)](#)

**Resource Tags**


AbCore, antibody, Mouse, PDX1, Polyclonal

 Login to edit tags

 Read more about tags

**Resource History & Actions**

Approved on  
 Last modified on Nov 09, 2010

 Login to edit or request an edit

**Related resources****BCBC**

No matching resources

**Other Consortia**

No matching resources

Data courtesy of [dkCOIN](#). Only public resources are displayed.

---

## Contact Information

---

### Preferred Contact

Name	Michael Ray
Institution	Vanderbilt University
Phone	(615)343-8258
Email	<a href="mailto:michael.ray@vanderbilt.edu">michael.ray@vanderbilt.edu</a>

---

## Associated Publications

---

*No publications associated*


## Comments

---



03/29/2005 06:58 AM  
[Inger Lund Pedersen](#)

For E14.5d mouse pancreas, IF (using the protocol available from the BCBC website); 1:800 dilution optimal. TSA not tested. Readily detects highly expressing cells; PDX1 not well detected over background in remaining precursor epithelium and in nascent acini.

 Login to add comments

---

[Home](#) · [Your Account](#) · [News & Events](#) · [Resources](#) · [Policies & Guidelines](#) · [About Us](#) · [FAQ](#) · [Site Map](#)

© 2002-2015 Beta Cell Biology Consortium - All Rights Reserved. [Terms of usage and disclaimer](#).

