

My Account

Login
Create Account

Resources

View All (813)
Adenoviruses (137)
Antibodies (175)
Bioimages (67)
Genomics Studies (145)
mESC Lines (68)
Mouse Strains (120)
Miscellaneous (46)
Protocols (55)
Research Data (4)
Resource Tags (389)
Visualization (9)

Research & Cores

Core Facilities (5)
Research Highlights (5)
Research Networks
Research Objectives

Information

About the BCBC
BCBC Events
Branding & Logos
Career Opportunities
Health
NIH hESC Registry
Policies & Guidelines
Member Publications
Research Programs
Research Investigators
Member Directory
Tutorials

Monoclonal Human Somatostatin raised in Mouse - Antibody RES296

Antibody Information

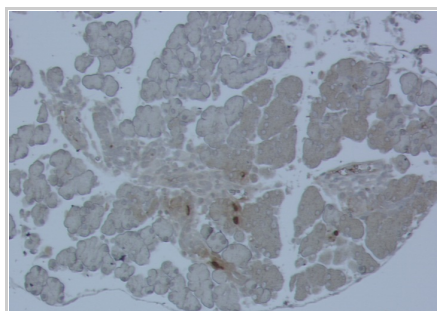
Antibody ID:	AB1985
Antigen:	Somatostatin (NCBI Gene ID: 6750)
Type:	Monoclonal
Isotype:	IgG1
Immunogen Source:	Peptide
Raised In:	Mouse
Peptide:	<i>Not provided</i>
Source of Antigen:	Human
Cross Reacts With:	Mouse,Rat,Human
Affinity Purified:	Affinity Purified
Purity Details:	<i>Not provided</i>
Positive Control:	Adult pancreas tissue
Notes:	Also works on several other species

Applications and Uses

Application	Concentration	Storage Buffer	Protocols and Description
IHC-P	1:500	PBS	Description: <i>Not provided</i> Protocols: 1. Peroxidase
IHC-Fr	1ug/ml	PBS with azide	Description: <i>Not provided</i> Protocols: 1. Immunofluorescent Protocol
IHC-P	1ug/ml	PBS	Description: <i>Not provided</i> Protocols: 1. Immunofluorescent Protocol

Associated Images

Image 1




Description:
Somatostatin staining on E18 wild type mice. Magnification 10x.

Reference:
Scott Heller

Repositories

Antibody Core (USA)


 Request this resource

Stock #: SOM-018
Availability Notes: *Not provided*


Antibody Core (Retired)

Out of stock Stock #: SOM-018
Availability Notes: Available in 100 ul aliquots

Access Status

 This resource is publicly viewable.


Request this Resource


 Request from a repository

Primary contributor: [Antibody Core \(Retired\)](#)
Co-contributed by:
• [Antibody Core \(USA\)](#)

Resource Tags

AbCore, antibody, Human, Monoclonal, Somatostatin

 Login to edit tags

 Read more about tags

Resource History & Actions

Approved on
Last modified on Nov 09, 2010

 Login to edit or request an edit

Related resources

BCBC

No matching resources

Other Consortia

No matching resources

Data courtesy of [dkCOIN](#). Only public resources are displayed.

Contact Information

Preferred Contact	
Name	Michael Ray
Institution	Vanderbilt University
Phone	(615)343-8258
Email	michael.ray@vanderbilt.edu

Associated Publications


Publication	Citation
15031110	Heller RS, Stoffers DA, Liu A, Schedl A, Crenshaw EB, Madsen OD, Serup P The role of Brn4/Pou3f4 and Pax6 in forming the pancreatic glucagon cell identity. (2004) <i>Dev Biol</i> 268 : 123-34 (Added June 21, 2005)

Comments



03/09/2007 11:47 AM
[Klaus Pechhold](#)

SOM-018 works very well, both for IHC-P and for flow cytometry (FCM). It works equally well in human, monkey, and mouse. Since it's a mouse IgG1 I had problems with background staining of mouse tissues especially in (pre)diabetic islets. To overcome this I used Invitrogens Xenon pre-labeling kits for FCM and M.O.M. blocking kits for IHC. It would have been very helpful if this antibody could be obtained fluorochrome-labeled, or at a form that allows self labeling.

 [Login to add comments](#)

[Home](#) · [Your Account](#) · [News & Events](#) · [Resources](#) · [Policies & Guidelines](#) · [About Us](#) · [FAQ](#) · [Site Map](#)

© 2002-2015 Beta Cell Biology Consortium - All Rights Reserved. [Terms of usage and disclaimer.](#)

