

**My Account**

[Login](#)  
[Create Account](#)

**Resources**

[View All \(813\)](#)  
[Adenoviruses \(137\)](#)  
[Antibodies \(175\)](#)  
[Bioimages \(67\)](#)  
[Genomics Studies \(145\)](#)  
[mESC Lines \(68\)](#)  
[Mouse Strains \(120\)](#)  
[Miscellaneous \(46\)](#)  
[Protocols \(55\)](#)  
[Research Data \(4\)](#)  
[Resource Tags \(389\)](#)  
[Visualization \(9\)](#)

**Research & Cores**

[Core Facilities \(5\)](#)  
[Research Highlights \(5\)](#)  
[Research Networks](#)  
[Research Objectives](#)

**Information**

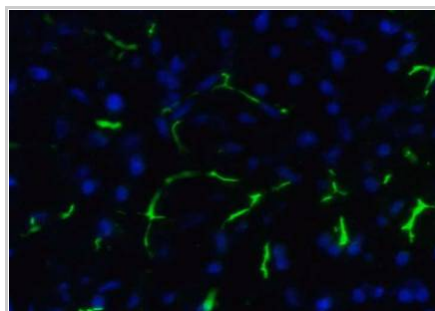
[About the BCBC](#)  
[BCBC Events](#)  
[Branding & Logos](#)  
[Career Opportunities](#)  
[Health](#)  
[NIH hESC Registry](#)  
[Policies & Guidelines](#)  
[Member Publications](#)  
[Research Programs](#)  
[Research Investigators](#)  
[Member Directory](#)  
[Tutorials](#)

**Monoclonal Rat Pancreatic Ducts raised in Mouse - Antibody RES298****Antibody Information**

<b>Antibody ID:</b>	AB2006
<b>Antigen:</b>	Pancreatic Ducts ( <i>No Gene ID associated</i> )
<b>Type:</b>	Monoclonal
<b>Isotype:</b>	IgM
<b>Immunogen Source:</b>	MSL-cl.3 cells
<b>Raised In:</b>	Mouse
<b>Peptide:</b>	<i>Not provided</i>
<b>Source of Antigen:</b>	Rat
<b>Cross Reacts With:</b>	Rat
<b>Affinity Purified:</b>	Supernatant
<b>Purity Details:</b>	<i>Not provided</i>
<b>Positive Control:</b>	Rat Pancreas
<b>Notes:</b>	<i>Not provided</i>

**Applications and Uses**

Application	Concentration	Storage Buffer	Protocols and Description
IHC-Fr	1:50 dilution	RPMI with 0.05% Sodium Azide	Description: <i>Not provided</i> Protocols: 1. <a href="#">Fluorescent IHC staining of unfixed frozen tissue</a>

**Associated Images****Image 1**

**Description:**  
Unfixed frozen rat pancreas stained with B6-B2/Cy2 green and DAPI/blue

**Reference:**  
*Not provided*

**Repositories**

BCBC members may [Login](#) to request this resource.


**Contact Information****Preferred Contact**

<b>Name</b>	Ole Madsen
<b>Institution</b>	Hagedorn Research Institute
<b>Phone</b>	+45 4443 9197
<b>Email</b>	<a href="mailto:odm@hagedorn.dk">odm@hagedorn.dk</a>


**Associated Publications**

Publication	Citation
<a href="#">2550269</a>	Beck TC, Madsen OD <a href="#">Monoclonal antibodies as probes to the differentiated</a>

**Access Status**

 This resource is publicly viewable.

**Request this Resource**


 Request from a repository


Primary contributor: [Antibody Core \(Retired\)](#)  
 Co-contributed by:  

- [Antibody Core \(USA\)](#)

**Resource Tags**

AbCore, antibody, Monoclonal, Pancreatic Ducts, Rat

 Login to edit tags

 Read more about tags

**Resource History & Actions**

Approved on  
 Last modified on Nov 05, 2010

 Login to edit or request an edit

**Related resources****BCBC**

*No matching resources*

**Other Consortia**

*No matching resources*

Data courtesy of [dkCOIN](#). Only public resources are displayed.


[exocrine pancreas react to monoclonal islet tumor tissue.](#) (1989) *Exp Clin Endocrinol* **93**: 255-60 (Added August 18, 2010)

---

## Comments

---

*There are no comments for this entry.*

 Login to add  
comments

[Home](#) · [Your Account](#) · [News & Events](#) · [Resources](#) · [Policies & Guidelines](#) · [About Us](#) · [FAQ](#) · [Site Map](#)

© 2002-2015 Beta Cell Biology Consortium - All Rights Reserved. [Terms of usage and disclaimer.](#)

