

My Account

Login
Create Account

Resources

View All (813)
Adenoviruses (137)
Antibodies (175)
Bioimages (67)
Genomics Studies (145)
mESC Lines (68)
Mouse Strains (120)
Miscellaneous (46)
Protocols (55)
Research Data (4)
Resource Tags (389)
Visualization (9)

Research & Cores

Core Facilities (5)
Research Highlights (5)
Research Networks
Research Objectives

Information

About the BCBC
BCBC Events
Branding & Logos
Career Opportunities
Health
NIH hESC Registry
Policies & Guidelines
Member Publications
Research Programs
Research Investigators
Member Directory
Tutorials

Monoclonal Rat Islet Delta Cells raised in Rat - Antibody RES299

Antibody Information

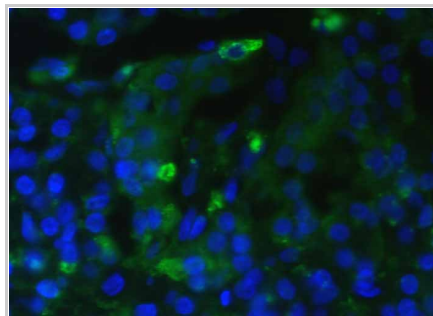
Antibody ID:	AB2007
Antigen:	Islet Delta Cells (<i>No Gene ID associated</i>)
Type:	Monoclonal
Isotype:	IgM
Immunogen Source:	Autoantibodies from Diabetic BB Rat
Raised In:	Rat
Peptide:	<i>Not provided</i>
Source of Antigen:	Rat
Cross Reacts With:	Mouse, Human
Affinity Purified:	Supernatant
Purity Details:	<i>Not provided</i>
Positive Control:	Adult Rat Pancreas
Notes:	<i>Not provided</i>

Applications and Uses

Application	Concentration	Storage Buffer	Protocols and Description
IHC-AIFr	Undiluted	RPMI with 0.05% Sodium Azide	Description: Fixation by formalin Protocols: 1. Fluorescent IHC staining of fixed frozen sections

Associated Images

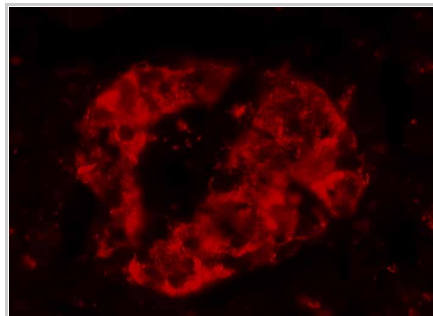
Image 1



Description:
Formalin frozen human pancreas stained with CA812/green and DAPI/blue

Reference:
Not provided

Image 2



Description:
Not provided


Reference:
Not provided

Repositories


No repositories indicated.

Contact Information

Access Status

 This resource is publicly viewable.

Request this Resource

 Request from a repository

Primary contributor: [Antibody Core](#)


(Retired)

Co-contributed by:

- [Antibody Core \(USA\)](#)

Resource Tags


AbCore, antibody, Islet Delta Cells, Monoclonal, Rat

 Login to edit tags

 Read more about tags

Resource History & Actions

Approved on
Last modified on Nov 05, 2010

 Login to edit or request an edit

Related resources

BCBC

No matching resources

Other Consortia

No matching resources

Data courtesy of [dkCOIN](#). Only public resources are displayed.

Preferred Contact

Name	Developmental Studies Hybridoma Bank
Institution	<i>Not provided</i>
Phone	319-335-3826
Email	dshb@uiowa.edu

Associated Publications

Publication	Citation
2122446	Contreas G, Jørgensen J, Madsen OD <u>Novel islet, duct, and acinar cell markers defined by monoclonal autoantibodies from prediabetic BB rats.</u> (1990) <i>Pancreas</i> 5: 540-7 (Added August 18, 2010)

Comments

There are no comments for this entry.

 Login to add comments

[Home](#) · [Your Account](#) · [News & Events](#) · [Resources](#) · [Policies & Guidelines](#) · [About Us](#) · [FAQ](#) · [Site Map](#)

© 2002-2015 Beta Cell Biology Consortium - All Rights Reserved. [Terms of usage and disclaimer.](#)

