

## My Account

Login  
Create Account

## Resources

View All (813)  
Adenoviruses (137)  
Antibodies (175)  
Bioimages (67)  
Genomics Studies (145)  
mESC Lines (68)  
Mouse Strains (120)  
Miscellaneous (46)  
Protocols (55)  
Research Data (4)  
Resource Tags (389)  
Visualization (9)

## Research &amp; Cores

Core Facilities (5)  
Research Highlights (5)  
Research Networks  
Research Objectives

## Information

About the BCBC  
BCBC Events  
Branding & Logos  
Career Opportunities  
Health  
NIH hESC Registry  
Policies & Guidelines  
Member Publications  
Research Programs  
Research Investigators  
Member Directory  
Tutorials

## Polyclonal Human ghrelin raised in Rabbit - Antibody RES314

### Antibody Information

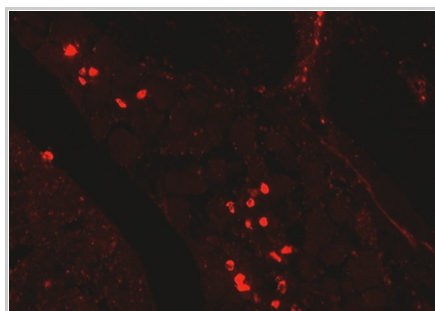
Antibody ID:	AB2029
Antigen:	ghrelin (NCBI Gene ID: <a href="#">51738</a> )
Type:	Polyclonal
Isotype:	Not Applicable
Immunogen Source:	Ghrelin without fatty acid chain
Raised In:	Rabbit
Peptide:	<i>Not provided</i>
Source of Antigen:	Human
Cross Reacts With:	Mouse, Human
Affinity Purified:	Serum
Purity Details:	<i>Not provided</i>
Positive Control:	Mouse embryo E15
Notes:	<i>Not provided</i>

### Applications and Uses

Application	Concentration	Storage Buffer	Protocols and Description
IHC-AIFr	1:500	<i>Not provided</i>	Description: <i>Not provided</i> Protocols: 1. <a href="#">IHC TSA staining protocol</a>
RIA	1:4800	<i>Not provided</i>	Description: <i>Not provided</i> Protocols: <i>Not provided</i>

### Associated Images

## Image 1



**Description:**  
IHC staining of whole mouse embryo E15

**Reference:**  
*Not provided*

### Repositories

BCBC members may [Login](#) to request this resource.


BCBC members may [Login](#) to request this resource.

### Contact Information


## Preferred Contact

Name	Michael Ray
Institution	Vanderbilt University
Phone	(615)343-8258
Email	<a href="mailto:michael.ray@vanderbilt.edu">michael.ray@vanderbilt.edu</a>

### Access Status

 This resource is publicly viewable.


### Request this Resource


 Request from a repository

Primary contributor: [Antibody Core \(Retired\)](#)  
Co-contributed by:  
• [Antibody Core \(USA\)](#)

### Resource Tags

AbCore, antibody, ghrelin, Human, Polyclonal

 Login to edit tags

 Read more about tags

### Resource History & Actions

Approved on  
Last modified on May 22, 2012

 Login to edit or request an edit

### Related resources

## BCBC

*No matching resources*

## Other Consortia

*No matching resources*

Data courtesy of [dkCOIN](#). Only public resources are displayed.


## Associated Publications

Publication	Citation
-------------	----------

<a href="#">12874966</a>	Espelund U, Hansen TK, Ørskov H, Frystyk J <a href="#">Assessment of ghrelin</a> . (2003) <i>APMIS Suppl</i> : 140-5 (Added July 30, 2010)
--------------------------	---

## Comments

*There are no comments for this entry.*

 Login to add  
comments

[Home](#) · [Your Account](#) · [News & Events](#) · [Resources](#) · [Policies & Guidelines](#) · [About Us](#) · [FAQ](#) · [Site Map](#)

© 2002-2015 Beta Cell Biology Consortium - All Rights Reserved. [Terms of usage and disclaimer](#).

