

My Account

[Login](#)
[Create Account](#)

Resources

[View All \(813\)](#)
[Adenoviruses \(137\)](#)
[Antibodies \(175\)](#)
[Bioimages \(67\)](#)
[Genomics Studies \(145\)](#)
[mESC Lines \(68\)](#)
[Mouse Strains \(120\)](#)
[Miscellaneous \(46\)](#)
[Protocols \(55\)](#)
[Research Data \(4\)](#)
[Resource Tags \(389\)](#)
[Visualization \(9\)](#)

Research & Cores

[Core Facilities \(5\)](#)
[Research Highlights \(5\)](#)
[Research Networks](#)
[Research Objectives](#)

Information

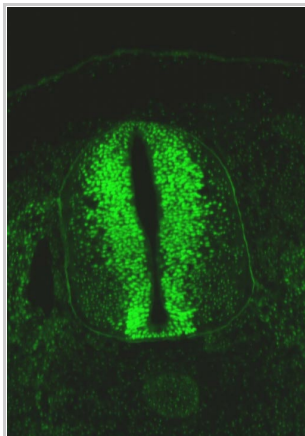
[About the BCBC](#)
[BCBC Events](#)
[Branding & Logos](#)
[Career Opportunities](#)
[Health](#)
[NIH hESC Registry](#)
[Policies & Guidelines](#)
[Member Publications](#)
[Research Programs](#)
[Research Investigators](#)
[Member Directory](#)
[Tutorials](#)

Polyclonal Human Sox2 raised in Rabbit - Antibody RES321**Antibody Information**

Antibody ID:	AB2094
Antigen:	Sox2 (NCBI Gene ID: 6657)
Type:	Polyclonal
Isotype:	Not Applicable
Immunogen Source:	Peptide
Raised In:	Rabbit
Peptide:	unknown
Source of Antigen:	Human
Cross Reacts With:	Mouse, Human
Affinity Purified:	Affinity Purified
Purity Details:	<i>Not provided</i>
Positive Control:	neural tube, stomach and esophagus endoderm
Notes:	Works nicely in standard indirect immunofluorescence at 1:500 - 1:1000 dilution and even better with TSA amplification at 1:2000 dilution. NB: Cross reacts with chicken Sox2.

Applications and Uses

Application	Concentration	Storage Buffer	Protocols and Description
IHC	<i>Not provided</i>	4% PFA O/N	Description: The rabbit anti-Sox2 polyclonal is good for fluorescent IHC on on tissue (cryosectioned) fixed in 4% PFA O/N - dilution should be 1:1000 for mouse tissue and 1:500 for chick tissue. And if TSA amplification is used the dilution should be 1:2000 as already mentioned in the notes on the website. We will soon try whole mount staining and let you know if it works and what dilution to use for that application. Protocols:

Associated Images**Image 1**

Description:
E4 chick neural tube stained for Sox2


Reference:
K. Markström, Hagedorn Research Institute

Image 2


Description:
E4 chick stomach stained for Sox2

Reference:
K. Markström, Hagedorn Research Institute

Access Status

 This resource is publicly viewable.


Request this Resource


 Request from a repository

Primary contributor: [Palle Serup](#)

Resource Tags

antibody, Human, Polyclonal, Sox2

 Login to edit tags

 [Read more about tags](#)

Resource History & Actions

Approved on
Last modified on Feb 23, 2006

 Login to edit or request an edit

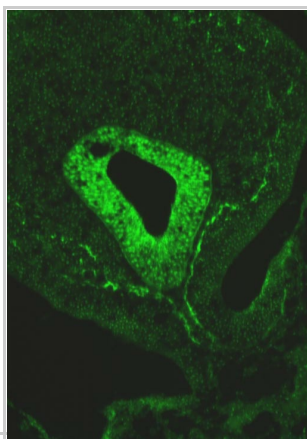
Related resources**BCBC**

No matching resources

Other Consortia


No matching resources

Data courtesy of [dkCOIN](#). Only public resources are displayed.



Repositories

Chemicon

 Request via www.chemicon.com/ website

Stock #: AB5603

Availability Notes: *Not provided*

Contact Information

Preferred Contact

Name EMD Millipore

Institution *Not provided*

Phone (866) 645-5476


Email NACustomerservice@emdmillipore.com

Associated Publications

No publications associated

Comments

There are no comments for this entry.

 Login to add comments

[Home](#) · [Your Account](#) · [News & Events](#) · [Resources](#) · [Policies & Guidelines](#) · [About Us](#) · [FAQ](#) · [Site Map](#)

© 2002-2015 Beta Cell Biology Consortium - All Rights Reserved. [Terms of usage and disclaimer](#).

