

**My Account**[Login](#)[Create Account](#)**Resources**[View All \(813\)](#)[Adenoviruses \(137\)](#)[Antibodies \(175\)](#)[Bioimages \(67\)](#)[Genomics Studies \(145\)](#)[mESC Lines \(68\)](#)[Mouse Strains \(120\)](#)[Miscellaneous \(46\)](#)[Protocols \(55\)](#)[Research Data \(4\)](#)[Resource Tags \(389\)](#)[Visualization \(9\)](#)**Research & Cores**[Core Facilities \(5\)](#)[Research Highlights \(5\)](#)[Research Networks](#)[Research Objectives](#)**Information**[About the BCBC](#)[BCBC Events](#)[Branding & Logos](#)[Career Opportunities](#)[Health](#)[NIH hESC Registry](#)[Policies & Guidelines](#)[Member Publications](#)[Research Programs](#)[Research Investigators](#)[Member Directory](#)[Tutorials](#)

## Monoclonal Human Pancreatic endocrine cells raised in Mouse - Antibody RES326

**Antibody Information**

<b>Antibody ID:</b>	AB2115
<b>Antigen:</b>	Pancreatic endocrine cells ( <i>No Gene ID associated</i> )
<b>Type:</b>	Monoclonal
<b>Isotype:</b>	IgG1
<b>Immunogen Source:</b>	Whole cells
<b>Raised In:</b>	Mouse
<b>Peptide:</b>	<i>Not provided</i>
<b>Source of Antigen:</b>	Human
<b>Cross Reacts With:</b>	Human
<b>Affinity Purified:</b>	Supernatant
<b>Purity Details:</b>	<i>Not provided</i>
<b>Positive Control:</b>	Acetone-fixed frozen tissue sections of adult human pancreas.

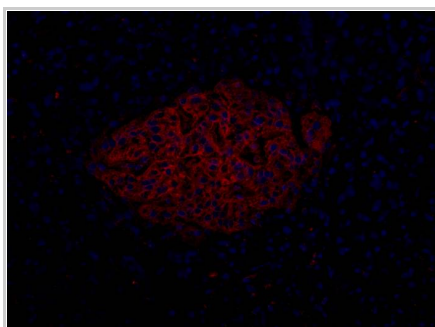
**Notes:** The monoclonal antibody HPi1 is derived from hybridoma HIC0-4F9. The monoclonal antibody selectively reacts with a cell surface molecule on human endocrine cells in pancreas. Mice were immunized with enriched islets. These cell preparations contain low levels of contaminating exocrine and ductal cells. These antibodies are currently being characterized. As such, the information included here should be considered preliminary data. It is requested that users of this antibody share data with provider as a mechanism to rapidly assist in antibody characterization.

**Applications and Uses**

Application	Concentration	Storage Buffer	Protocols and Description
FACS	Undiluted	Tissue culture media	Description: <i>Not provided</i> Protocols: 1. <a href="#">Flow Cytometry: Labeling of Cell Surface Molecules on Human Cells with Mouse Monoclonal Antibodies</a>
IHC-AF	Undiluted	Tissue culture media	Description: <i>Not provided</i> Protocols: 1. <a href="#">Immunofluorescence Detection of Mouse Monoclonal Antibodies on Sections of Acetone-Fixed Frozen Human Tissue</a>

**Associated Images**

Image 1


**Description:**

Human pancreas frozen section illustrating HPi1 reactivity with endocrine cells. The monoclonal antibody was detected using a polyclonal Cy3-conjugated anti-mouse immunoglobulin (red). Cell nuclei were labeled with Hoeschst 33342 (blue).


**Reference:**

*Not provided*

**Access Status**

 This resource is publicly viewable.

**Request this Resource**

 Request from a repository

Primary contributor: [Grompe Lab](#)

Co-contributed by:

- [Streeter Lab](#)

**Resource Tags**

antibody, FACS, Human, Monoclonal, Pancreatic endocrine cells


 Login to edit tags

 Read more about tags

**Resource History & Actions**

Approved on

Last modified on Jul 14, 2006

 Login to edit or request an edit

**Related resources****BCBC**

*No matching resources*

**Other Consortia**

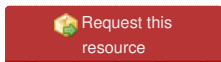
*No matching resources*

Data courtesy of [dkCOIN](#). Only public resources are displayed.

---

## Repositories

### Streeter Lab



**Stock #:** HPI1

**Availability Notes:** [Available at OHSU, Stock #1038A](#)

---

## Contact Information

### Preferred Contact

<b>Name</b>	Markus Grompe
<b>Institution</b>	Oregon Health & Science University
<b>Phone</b>	503-494-6888
<b>Email</b>	<a href="mailto:gropem@ohsu.edu">gropem@ohsu.edu</a>

### Primary Lab Contact

<b>Name</b>	<i>Not provided</i>
<b>Institution</b>	<i>Not provided</i>
<b>Phone</b>	<i>Not provided</i>
<b>Email</b>	<i>Not provided</i>

---

## Associated Publications

*No publications associated*

---

## Comments

*There are no comments for this entry.*

