

My Account[Login](#)[Create Account](#)**Resources**[View All \(813\)](#)[Adenoviruses \(137\)](#)[Antibodies \(175\)](#)[Bioimages \(67\)](#)[Genomics Studies \(145\)](#)[mESC Lines \(68\)](#)[Mouse Strains \(120\)](#)[Miscellaneous \(46\)](#)[Protocols \(55\)](#)[Research Data \(4\)](#)[Resource Tags \(389\)](#)[Visualization \(9\)](#)**Research & Cores**[Core Facilities \(5\)](#)[Research Highlights \(5\)](#)[Research Networks](#)[Research Objectives](#)**Information**[About the BCBC](#)[BCBC Events](#)[Branding & Logos](#)[Career Opportunities](#)[Health](#)[NIH hESC Registry](#)[Policies & Guidelines](#)[Member Publications](#)[Research Programs](#)[Research Investigators](#)[Member Directory](#)[Tutorials](#)

Monoclonal Human Pancreatic endocrine cells raised in Mouse - Antibody RES327

Antibody Information

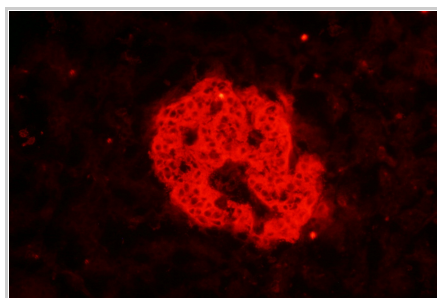
Antibody ID:	AB2116
Antigen:	Pancreatic endocrine cells (<i>No Gene ID associated</i>)
Type:	Monoclonal
Isotype:	IgG2b
Immunogen Source:	Whole cells
Raised In:	Mouse
Peptide:	<i>Not provided</i>
Source of Antigen:	Human
Cross Reacts With:	Human
Affinity Purified:	Supernatant
Purity Details:	<i>Not provided</i>
Positive Control:	Acetone-fixed frozen tissue sections of adult human pancreas.
Notes:	HIC1 4-G6 reacts with a cell-surface molecule on human pancreatic endocrine cells.

Applications and Uses

Application	Concentration	Storage Buffer	Protocols and Description
FACS	Undiluted	Tissue culture media	Description: <i>Not provided</i> Protocols: 1. Flow Cytometry: Labeling of Cell Surface Molecules on Human Cells with Mouse Monoclonal Antibodies
IHC-AF	Undiluted	Tissue culture media	Description: <i>Not provided</i> Protocols: 1. Immunofluorescence Detection of Mouse Monoclonal Antibodies on Sections of Acetone-Fixed Frozen Human Tissue

Associated Images

Image 1

**Description:**

Human pancreas frozen section illustrating reactivity of HIC1 4-G6 with endocrine cells. The monoclonal antibody was detected using a polyclonal Cy3-conjugated anti-mouse immunoglobulin.

Reference:


Not provided

Image 2


Description:

Flow cytometric analysis of enzyme dispersed human islet cells incubated with HIC1 4-G6. Analysis reveals reactivity of HIC1 4-G6 with a cell surface molecule (or molecules) on dispersed islet cells.

Access Status

 This resource is publicly viewable.

Request this Resource

 Request from a repository

Primary contributor: [Grompe Lab](#)

Co-contributed by:

- [Streeter Lab](#)

Resource Tags

antibody, FACS, Human, Monoclonal, Pancreatic endocrine cells


 Login to edit tags

 Read more about tags

Resource History & Actions

Approved on

Last modified on Jun 08, 2010

 Login to edit or request an edit

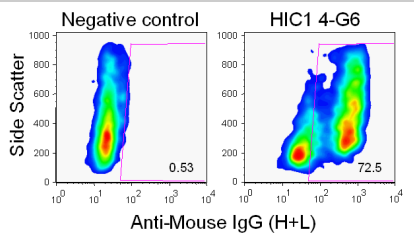
Related resources**BCBC**

No matching resources

Other Consortia

No matching resources

Data courtesy of [dkCOIN](#). Only public resources are displayed.



Reference:
Not provided

Repositories

Streeter Lab

Out of stock

Stock #: Not provided

Availability Notes: Not provided

Contact Information

Preferred Contact

Name Philip Streeter

Institution Oregon Health & Science University

Phone 503-494-1762

Email streetep@ohsu.edu

Associated Publications

No publications associated

Comments

There are no comments for this entry.

Login to add comments

