

**My Account**

[Login](#)  
[Create Account](#)

**Resources**

[View All \(813\)](#)  
[Adenoviruses \(137\)](#)  
[Antibodies \(175\)](#)  
[Bioimages \(67\)](#)  
[Genomics Studies \(145\)](#)  
[mESC Lines \(68\)](#)  
[Mouse Strains \(120\)](#)  
[Miscellaneous \(46\)](#)  
[Protocols \(55\)](#)  
[Research Data \(4\)](#)  
[Resource Tags \(389\)](#)  
[Visualization \(9\)](#)

**Research & Cores**

[Core Facilities \(5\)](#)  
[Research Highlights \(5\)](#)  
[Research Networks](#)  
[Research Objectives](#)

**Information**

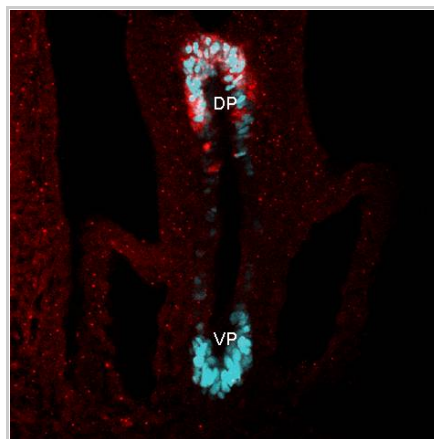
[About the BCBC](#)  
[BCBC Events](#)  
[Branding & Logos](#)  
[Career Opportunities](#)  
[Health](#)  
[NIH hESC Registry](#)  
[Policies & Guidelines](#)  
[Member Publications](#)  
[Research Programs](#)  
[Research Investigators](#)  
[Member Directory](#)  
[Tutorials](#)

**Polyclonal E. coli beta Galactosidase raised in Chicken - Antibody RES333****Antibody Information**

<b>Antibody ID:</b>	AB2134
<b>Antigen:</b>	beta Galactosidase (NCBI Gene ID: <a href="#">945006</a> )
<b>Type:</b>	Polyclonal
<b>Isotype:</b>	Not Applicable
<b>Immunogen Source:</b>	Purified Protein
<b>Raised In:</b>	Chicken
<b>Peptide:</b>	<i>Not provided</i>
<b>Source of Antigen:</b>	E. coli
<b>Cross Reacts With:</b>	Unknown
<b>Affinity Purified:</b>	Serum
<b>Purity Details:</b>	<i>Not provided</i>
<b>Positive Control:</b>	<i>Not provided</i>
<b>Notes:</b>	<i>Not provided</i>

**Applications and Uses**

Application	Concentration	Storage Buffer	Protocols and Description
IHC	1:2000	<i>Not provided</i>	Description: Wholmount immunofluorescence as described in Ahnfelt-Ronne et al., 2007, J Histochem and cytochem: 55(9): 925-930. Protocols:

**Associated Images****Image 1**

**Description:**  
e9.5 mouse embryo (D111 +/tm1Gos) fixed o/n in 4% formaldehyde. Stained in wholmount for Pdx1, Ab2027 diluted 1:16000 (blue) and betagalactosidase 1:2000 (red). Image obtained as a confocal optical section from a thick vibratome section. DP: dorsal pancreas, VP: ventral pancreas

**Reference:**  
Jonas Ahnfelt-Rønne, Hagedorn Research Institute

**Repositories****AbCam**


[Request via www.abcam.com website](#)

**Stock #:** ab9361  
**Availability Notes:** *Not provided*

**Contact Information****Preferred Contact**

<b>Name</b>	abcam
<b>Institution</b>	<i>Not provided</i>
<b>Phone</b>	(888) 77-ABCAM (22226)

**Access Status**

 This resource is publicly viewable.

**Request this Resource**

[Request from a repository](#)

Primary contributor: [Antibody Core \(Retired\)](#)  
 Co-contributed by:  

- [Antibody Core \(USA\)](#)

**Resource Tags**

antibody, beta Galactosidase, E. coli, Polyclonal

[Login to edit tags](#)

[Read more about tags](#)

**Resource History & Actions**

Approved on  
 Last modified on Apr 11, 2007

[Login to edit or request an edit](#)

**Related resources****BCBC**

*No matching resources*

**Other Consortia**

*No matching resources*

Data courtesy of [dkCOIN](#). Only public resources are displayed.

---

**Email** [us.orders@abcam.com](mailto:us.orders@abcam.com)

---

### **Associated Publications**


---

*No publications associated*

### **Comments**

---

*There are no comments for this entry.*

 Login to add  
comments

[Home](#) · [Your Account](#) · [News & Events](#) · [Resources](#) · [Policies & Guidelines](#) · [About Us](#) · [FAQ](#) · [Site Map](#)

© 2002-2015 Beta Cell Biology Consortium - All Rights Reserved. [Terms of usage and disclaimer.](#)

