

**My Account**

[Login](#)  
[Create Account](#)

**Resources**

[View All \(813\)](#)  
[Adenoviruses \(137\)](#)  
[Antibodies \(175\)](#)  
[Bioimages \(67\)](#)  
[Genomics Studies \(145\)](#)  
[mESC Lines \(68\)](#)  
[Mouse Strains \(120\)](#)  
[Miscellaneous \(46\)](#)  
[Protocols \(55\)](#)  
[Research Data \(4\)](#)  
[Resource Tags \(389\)](#)  
[Visualization \(9\)](#)

**Research & Cores**

[Core Facilities \(5\)](#)  
[Research Highlights \(5\)](#)  
[Research Networks](#)  
[Research Objectives](#)

**Information**

[About the BCBC](#)  
[BCBC Events](#)  
[Branding & Logos](#)  
[Career Opportunities](#)  
[Health](#)  
[NIH hESC Registry](#)  
[Policies & Guidelines](#)  
[Member Publications](#)  
[Research Programs](#)  
[Research Investigators](#)  
[Member Directory](#)  
[Tutorials](#)

**Polyclonal Mouse Ptf1a raised in Rabbit - Antibody RES335****Antibody Information**

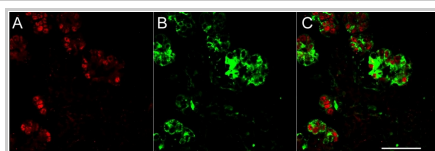
<b>Antibody ID:</b>	AB2153
<b>Antigen:</b>	Ptf1a (NCBI Gene ID: <a href="#">19213</a> )
<b>Type:</b>	Polyclonal
<b>Isotype:</b>	Not Applicable
<b>Immunogen Source:</b>	Fusion Protein
<b>Raised In:</b>	Rabbit
<b>Peptide:</b>	GST-Ptf1a (aa11-237)
<b>Source of Antigen:</b>	Mouse
<b>Cross Reacts With:</b>	Mouse, Human
<b>Affinity Purified:</b>	Serum
<b>Purity Details:</b>	<i>Not provided</i>
<b>Positive Control:</b>	mouse e15.5 pancreas
<b>Notes:</b>	<i>Not provided</i>

**Applications and Uses**

Application	Concentration	Storage Buffer	Protocols and Description
IHC	1:4000	<i>Not provided</i>	Description: Mouse e15.5 pancreas, 4% PFA O/N, 30% suc O/N, Ptf1a 1:4000 O/N Protocols:

**Associated Images**

## Image 1



**Description:**  
 Mouse e15.5 pancreas, 4% PFA O/N, 30% suc O/N, Ptf1a (red) 1:4000 O/N + amylase (green) 1:300 (sheep, arics), DaR-cy3 + DaShe-cy5 (Jackson), 45 min, bar is 50 micrometer.

**Reference:**  
 Jacob Hald, Hagedorn Research Institute

**Repositories****Antibody Core (USA)**

[Request this resource](#)
**Stock #: 2432A**  
**Availability Notes:** *Not provided*


**Antibody Core (Retired)**

*Out of stock*
**Stock #: 2432A**  
**Availability Notes:** Available in 25 microliter aliquots

**Contact Information****Preferred Contact**

<b>Name</b>	Michael Ray
<b>Institution</b>	Vanderbilt University
<b>Phone</b>	(615)343-8258
<b>Email</b>	<a href="mailto:michael.ray@vanderbilt.edu">michael.ray@vanderbilt.edu</a>

**Access Status**

 This resource is publicly viewable.

**Request this Resource**

[Request from a repository](#)

Primary contributor: [Antibody Core \(Retired\)](#)  
 Co-contributed by:  
 • [Antibody Core \(USA\)](#)

**Resource Tags**

AbCore, antibody, Mouse, p48 Ptf1a, Polyclonal, Ptf1a

[Login to edit tags](#)

[Read more about tags](#)

**Resource History & Actions**

Approved on  
 Last modified on Aug 29, 2007

[Login to edit or request an edit](#)

**Related resources****BCBC**

*No matching resources*

**Other Consortia**

*No matching resources*

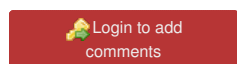
Data courtesy of [dkCOIN](#). Only public resources are displayed.

## Associated Publications

Publication	Citation
<a href="#">22096075</a>	Ahnfelt-Rønne J, Jørgensen MC, Klinck R, Jensen JN, Füchtbauer EM, Deering T, MacDonald RJ, Wright CV, Madsen OD, Serup P <a href="#">Ptf1a-mediated control of Dll1 reveals an alternative to the lateral inhibition mechanism.</a> (2012) <i>Development</i> <b>139</b> : 33-45 (Added November 29, 2012)
<a href="#">18347078</a>	Hald J, Sprinkel AE, Ray M, Serup P, Wright C, Madsen OD <a href="#">Generation and characterization of Ptf1a antiserum and localization of Ptf1a in relation to Nkx6.1 and Pdx1 during the earliest stages of mouse pancreas development.</a> (2008) <i>J Histochem Cytochem</i> <b>56</b> : 587-95 (Added June 13, 2013)

## Comments

There are no comments for this entry.



[Home](#) · [Your Account](#) · [News & Events](#) · [Resources](#) · [Policies & Guidelines](#) · [About Us](#) · [FAQ](#) · [Site Map](#)

© 2002-2015 Beta Cell Biology Consortium - All Rights Reserved. [Terms of usage and disclaimer.](#)

