

My Account

[Login](#)
[Create Account](#)

Resources

[View All \(813\)](#)
[Adenoviruses \(137\)](#)
[Antibodies \(175\)](#)
[Bioimages \(67\)](#)
[Genomics Studies \(145\)](#)
[mESC Lines \(68\)](#)
[Mouse Strains \(120\)](#)
[Miscellaneous \(46\)](#)
[Protocols \(55\)](#)
[Research Data \(4\)](#)
[Resource Tags \(389\)](#)
[Visualization \(9\)](#)

Research & Cores

[Core Facilities \(5\)](#)
[Research Highlights \(5\)](#)
[Research Networks](#)
[Research Objectives](#)

Information

[About the BCBC](#)
[BCBC Events](#)
[Branding & Logos](#)
[Career Opportunities](#)
[Health](#)
[NIH hESC Registry](#)
[Policies & Guidelines](#)
[Member Publications](#)
[Research Programs](#)
[Research Investigators](#)
[Member Directory](#)
[Tutorials](#)

Monoclonal Human Pancreatic duct cells raised in Mouse - Antibody RES337**Antibody Information**

Antibody ID:	AB2173
Antigen:	Pancreatic duct cells (<i>No Gene ID associated</i>)
Type:	Monoclonal
Isotype:	IgG1
Immunogen Source:	Enriched pancreatic islets
Raised In:	Mouse
Peptide:	<i>Not provided</i>
Source of Antigen:	Human
Cross Reacts With:	Human
Affinity Purified:	Supernatant
Purity Details:	<i>Not provided</i>
Positive Control:	Acetone fixed frozen sections of adult human pancreas
Notes:	The monoclonal antibody HPd1 is derived from hybridoma DHIC2-4A10. The monoclonal antibody selectively reacts with human duct cells in human pancreas. Mice were immunized with enzyme dispersed enriched islets. These cell preparations contain low levels of contaminating exocrine and ductal cells. These antibodies are currently being characterized. As such, the information included here should be considered preliminary data. It is requested that users of this antibody share data with provider as a mechanism to rapidly assist in antibody characterization.

Applications and Uses

Application	Concentration	Storage Buffer	Protocols and Description
FACS	Undiluted	Tissue culture media	Description: Flow cytometric analysis of enzyme dispersed enriched human islets revealed that the monoclonal antibody HPd1 reacts with a cell surface molecule on duct cells. Protocols: <ol style="list-style-type: none"> Flow Cytometry: Labeling of Cell Surface Molecules on Human Cells with Mouse Monoclonal Antibodies
IHC-AF	Undiluted	Tissue culture media	Description: <i>Not provided</i> Protocols: <ol style="list-style-type: none"> Immunofluorescence Detection of Mouse Monoclonal Antibodies on Sections of Acetone-Fixed Frozen Human Tissue


Associated Images

Image 1


Description:
Human pancreas frozen section illustrating HPd1 reactivity with ductal cells. The monoclonal antibody was detected using a polyclonal Cy3-conjugated anti-mouse immunoglobulin (red). Cell nuclei were labeled with Hoeschst 33342 (blue).

Reference:
Not provided

Access Status

 This resource is publicly viewable.

Request this Resource

 Request from a repository

Primary contributor: [Grompe Lab](#)

Co-contributed by:

- [Streeter Lab](#)

Resource Tags


antibody, FACS, Human, Monoclonal, Pancreatic duct cells

 Login to edit tags

 Read more about tags

Resource History & Actions

Approved on
Last modified on Jun 08, 2010

 Login to edit or request an edit

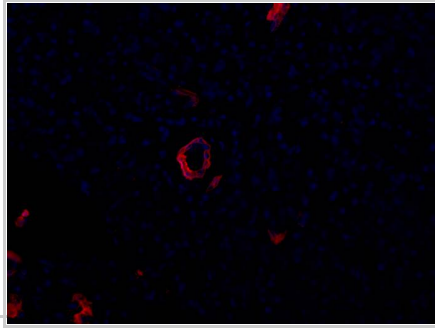
Related resources**BCBC**

No matching resources

Other Consortia

No matching resources

Data courtesy of [dkCOIN](#). Only public resources are displayed.



Repositories

Streeter Lab

Out of stock

Stock #: *Not provided*

Availability Notes: [Available at OHSU, Stock #1038J](#)

Contact Information

Preferred Contact

Name OHSU

Institution *Not provided*

Phone (503) 494-8200

Email techmgmt@ohsu.edu

Associated Publications

No publications associated

Comments

There are no comments for this entry.

 [Login to add comments](#)

[Home](#) · [Your Account](#) · [News & Events](#) · [Resources](#) · [Policies & Guidelines](#) · [About Us](#) · [FAQ](#) · [Site Map](#)

© 2002-2015 Beta Cell Biology Consortium - All Rights Reserved. [Terms of usage and disclaimer.](#)

