

**My Account**

[Login](#)  
[Create Account](#)

**Resources**

[View All \(813\)](#)  
[Adenoviruses \(137\)](#)  
[Antibodies \(175\)](#)  
[Bioimages \(67\)](#)  
[Genomics Studies \(145\)](#)  
[mESC Lines \(68\)](#)  
[Mouse Strains \(120\)](#)  
[Miscellaneous \(46\)](#)  
[Protocols \(55\)](#)  
[Research Data \(4\)](#)  
[Resource Tags \(389\)](#)  
[Visualization \(9\)](#)

**Research & Cores**

[Core Facilities \(5\)](#)  
[Research Highlights \(5\)](#)  
[Research Networks](#)  
[Research Objectives](#)

**Information**

[About the BCBC](#)  
[BCBC Events](#)  
[Branding & Logos](#)  
[Career Opportunities](#)  
[Health](#)  
[NIH hESC Registry](#)  
[Policies & Guidelines](#)  
[Member Publications](#)  
[Research Programs](#)  
[Research Investigators](#)  
[Member Directory](#)  
[Tutorials](#)

**Monoclonal Human Alpha cells raised in Mouse - Antibody RES343****Antibody Information**

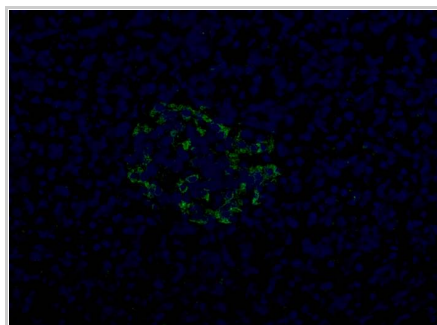
<b>Antibody ID:</b>	AB2198
<b>Antigen:</b>	Alpha cells ( <i>No Gene ID associated</i> )
<b>Type:</b>	Monoclonal
<b>Isotype:</b>	IgG1
<b>Immunogen Source:</b>	Whole cells
<b>Raised In:</b>	Mouse
<b>Peptide:</b>	<i>Not provided</i>
<b>Source of Antigen:</b>	Human
<b>Cross Reacts With:</b>	Human
<b>Affinity Purified:</b>	Supernatant
<b>Purity Details:</b>	<i>Not provided</i>
<b>Positive Control:</b>	Acetone-fixed frozen tissue sections of adult human pancreas.
<b>Notes:</b>	The monoclonal antibody HPA2 is derived from hybridoma DHC12-2B4. The monoclonal antibody selectively reacts with a cell surface molecule on human pancreatic alpha cells. Mice were immunized with enzyme dispersed enriched islets. These cell preparations contain low levels of contaminating exocrine and ductal cells. These antibodies are currently being characterized. As such, the information included here should be considered preliminary data. It is requested that users of this antibody share data with provider as a mechanism to rapidly assist in antibody characterization.

**Applications and Uses**

Application	Concentration	Storage Buffer	Protocols and Description
FACS	Undiluted	Tissue culture media	Description: <i>Not provided</i> Protocols: 1. <a href="#">Flow Cytometry: Labeling of Cell Surface Molecules on Human Cells with Mouse Monoclonal Antibodies</a>
IHC-AF	Undiluted	Tissue culture media	Description: <i>Not provided</i> Protocols: 1. <a href="#">Immunofluorescence Detection of Mouse Monoclonal Antibodies on Sections of Acetone-Fixed Frozen Human Tissue</a>

**Associated Images**

Image 1


**Description:**

Human pancreas frozen section illustrating HPA2 reactivity with alpha cells. The monoclonal antibody was detected using a polyclonal FITC-conjugated anti-mouse immunoglobulin (green). Cell nuclei were labeled with Hoechst 33342 (blue).


**Reference:**

*Not provided*

**Access Status**

 This resource is publicly viewable.

**Request this Resource**

 Request from a repository


Primary contributor: [Grompe Lab](#)

Co-contributed by:

- [Streeter Lab](#)

**Resource Tags**


Alpha cells, antibody, FACS, Human, Monoclonal

 Login to edit tags

 Read more about tags

**Resource History & Actions**

Approved on  
Last modified on Jun 08, 2010

 Login to edit or request an edit

**Related resources****BCBC**

*No matching resources*

**Other Consortia**

*No matching resources*

Data courtesy of [dkCOIN](#). Only public resources are displayed.

## Repositories

Streeter Lab

*Out of stock*

**Stock #:** *Not provided*

**Availability Notes:** [Available at OHSU, Stock #1038H](#)

## Contact Information

Preferred Contact

**Name** OHSU

**Institution** *Not provided*

**Phone** (503) 494-8200


**Email** [techmgt@ohsu.edu](mailto:techmgt@ohsu.edu)

## Associated Publications

*No publications associated*

## Comments

*There are no comments for this entry.*

 [Login to add comments](#)

[Home](#) · [Your Account](#) · [News & Events](#) · [Resources](#) · [Policies & Guidelines](#) · [About Us](#) · [FAQ](#) · [Site Map](#)

© 2002-2015 Beta Cell Biology Consortium - All Rights Reserved. [Terms of usage and disclaimer.](#)

