

My Account

Login
Create Account

Resources

View All (813)
Adenoviruses (137)
Antibodies (175)
Bioimages (67)
Genomics Studies (145)
mESC Lines (68)
Mouse Strains (120)
Miscellaneous (46)
Protocols (55)
Research Data (4)
Resource Tags (389)
Visualization (9)

Research & Cores

Core Facilities (5)
Research Highlights (5)
Research Networks
Research Objectives

Information

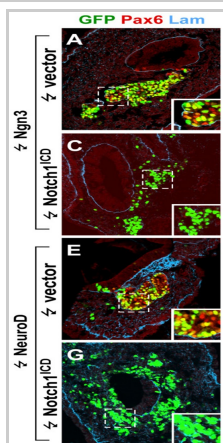
About the BCBC
BCBC Events
Branding & Logos
Career Opportunities
Health
NIH hESC Registry
Policies & Guidelines
Member Publications
Research Programs
Research Investigators
Member Directory
Tutorials

Polyclonal Mouse Laminin raised in Rabbit - Antibody RES347**Antibody Information**

Antibody ID:	AB2293
Antigen:	Laminin (NCBI Gene ID: 16772)
Type:	Polyclonal
Isotype:	Not Applicable
Immunogen Source:	Purified Protein
Raised In:	Rabbit
Peptide:	<i>Not provided</i>
Source of Antigen:	Mouse
Cross Reacts With:	Mouse, Rat, Human
Affinity Purified:	Affinity Purified
Purity Details:	<i>Not provided</i>
Positive Control:	<i>Not provided</i>
Notes:	Formalin fixed tissue. Cryosections.

Applications and Uses

Application	Concentration	Storage Buffer	Protocols and Description
<i>None provided</i>			

Associated Images**Image 1****Description:**

Confocal sections of chicken embryonic pancreata 52 hours after electroporation with Ngn3 (A), Ngn3 and Notch1^{ICD} (C), NeuroD (E), or NeuroD and Notch1^{ICD} (G) subjected to immunohistochemical stainings against Pax6 (red) and laminin (blue) (A, C, E, G).

Reference:

17555568

Repositories**Sigma**

 Request via www.sigma.com website


Stock #: L9393

Availability Notes: *Not provided*


Contact Information**Preferred Contact**

Name	Sigma-Aldrich Corp.
Institution	<i>Not provided</i>
Phone	314-771-5765
Email	cssorders@sial.com

Access Status

 This resource is publicly viewable.

Request this Resource

 Request from a repository

Primary contributor: [Antibody Core](#)


(Retired)

Co-contributed by:

- [Antibody Core \(USA\)](#)

Resource Tags

antibody, Laminin, Mouse, Polyclonal


 Login to edit tags

 Read more about tags

Resource History & Actions

Approved on

Last modified on May 07, 2013

 Login to edit or request an edit

Related resources**BCBC**

No matching resources

Other Consortia

No matching resources


Data courtesy of [dkCOIN](#). Only public resources are displayed.

Associated Publications

Publication	Citation
17555568	Ahnfelt-Rønne J, Hald J, Bødker A, Yassin H, Serup P, Hecksher-Sørensen J Preservation of proliferating pancreatic progenitor cells by Delta-Notch signaling in the embryonic chicken pancreas. (2007) <i>BMC Dev Biol</i> 7: 63 (Added December 18, 2009)

Comments

There are no comments for this entry.

 [Login to add comments](#)

[Home](#) · [Your Account](#) · [News & Events](#) · [Resources](#) · [Policies & Guidelines](#) · [About Us](#) · [FAQ](#) · [Site Map](#)

© 2002-2015 Beta Cell Biology Consortium - All Rights Reserved. [Terms of usage and disclaimer.](#)

