

**My Account**

[Login](#)  
[Create Account](#)

**Resources**

[View All \(813\)](#)  
[Adenoviruses \(137\)](#)  
[Antibodies \(175\)](#)  
[Bioimages \(67\)](#)  
[Genomics Studies \(145\)](#)  
[mESC Lines \(68\)](#)  
[Mouse Strains \(120\)](#)  
[Miscellaneous \(46\)](#)  
[Protocols \(55\)](#)  
[Research Data \(4\)](#)  
[Resource Tags \(389\)](#)  
[Visualization \(9\)](#)

**Research & Cores**

[Core Facilities \(5\)](#)  
[Research Highlights \(5\)](#)  
[Research Networks](#)  
[Research Objectives](#)

**Information**

[About the BCBC](#)  
[BCBC Events](#)  
[Branding & Logos](#)  
[Career Opportunities](#)  
[Health](#)  
[NIH hESC Registry](#)  
[Policies & Guidelines](#)  
[Member Publications](#)  
[Research Programs](#)  
[Research Investigators](#)  
[Member Directory](#)  
[Tutorials](#)

**Polyclonal Human TSPAN7 raised in Rabbit - Antibody RES4040****Antibody Information**

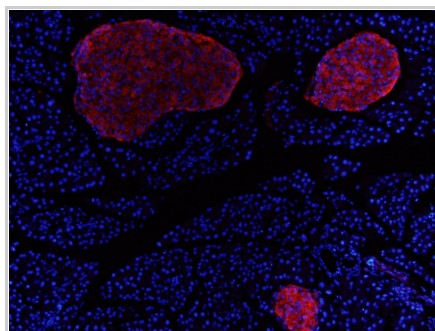
<b>Antibody ID:</b>	AB2974
<b>Antigen:</b>	TSPAN7 (NCBI Gene ID: <a href="#">7102</a> )
<b>Type:</b>	Polyclonal
<b>Isotype:</b>	Not Applicable
<b>Immunogen Source:</b>	Peptide
<b>Raised In:</b>	Rabbit
<b>Peptide:</b>	TSPAN7(aa136-aa228)
<b>Source of Antigen:</b>	Human
<b>Cross Reacts With:</b>	Mouse,Human
<b>Affinity Purified:</b>	Affinity Purified
<b>Purity Details:</b>	<i>Not provided</i>
<b>Positive Control:</b>	Adult mouse cryo pancreas
<b>Notes:</b>	<i>Not provided</i>

**Applications and Uses**

Application	Concentration	Storage Buffer	Protocols and Description
IHC	1:1000	As in stock	Description: This is done with TSA Protocols: 1. <a href="#">Immunofluorescent Staining</a>

**Associated Images**

## Image 1

**Description:**

Islets are stained in adult mouse pancreas. Pancreas was fixed O/N in PFA, 30% sucrose O/N and then OCT

**Reference:**

Jacob Hald, Hagedorn Research Institute

**Repositories**

## Sigma

[Request via www.sigma.com website](#)

**Stock #:** HPA003140

**Availability Notes:** *Not provided*

**Contact Information**


## Preferred Contact

<b>Name</b>	Ole Madsen
<b>Institution</b>	Hagedorn Research Institute
<b>Phone</b>	+45 4443 9197
<b>Email</b>	<a href="mailto:odm@hagedorn.dk">odm@hagedorn.dk</a>


## Primary Lab Contact

<b>Name</b>	Jacob Hald
-------------	------------

**Access Status**

 This resource is publicly viewable.

**Request this Resource**

 Request from a repository

Primary contributor: [Antibody Core \(Retired\)](#)


Co-contributed by:

- [Antibody Core \(USA\)](#)

**Resource Tags**

antibody, Human, Polyclonal, TSPAN7


 Login to edit tags

 Read more about tags

**Resource History & Actions**

Approved on

Last modified on Nov 09, 2010

 Login to edit or request an edit

**Related resources****BCBC**

*No matching resources*

**Other Consortia**

*No matching resources*

Data courtesy of [dkCOIN](#). Only public resources are displayed.

<b>Institution</b>	Hagedorn Research Institute
<b>Phone</b>	+45-30759185
<b>Email</b>	<a href="mailto:hald@hagedorn.dk">hald@hagedorn.dk</a>

### Associated Publications

Publication	Citation
<a href="#">20587347</a>	Lindskog C, Asplund A, Engkvist M, Uhlen M, Korsgren O, Ponten F <u>Antibody-based proteomics for discovery and exploration of proteins expressed in pancreatic islets.</u> (2010) <i>Discov Med</i> 9: 565-78 (Added November 09, 2010)

### Comments

There are no comments for this entry.

