

My Account

Login
Create Account

Resources

View All (813)
Adenoviruses (137)
Antibodies (175)
Bioimages (67)
Genomics Studies (145)
mESC Lines (68)
Mouse Strains (120)
Miscellaneous (46)
Protocols (55)
Research Data (4)
Resource Tags (389)
Visualization (9)

Research & Cores

Core Facilities (5)
Research Highlights (5)
Research Networks
Research Objectives

Information

About the BCBC
BCBC Events
Branding & Logos
Career Opportunities
Health
NIH hESC Registry
Policies & Guidelines
Member Publications
Research Programs
Research Investigators
Member Directory
Tutorials

Rosa26^{(CFP)Mgn} - Mouse Strain RES4054**Mouse Information**

Common Name:	Rosa26 ^{(CFP)Mgn}
MGI Official Name:	Rosa26 ^{tm3Mgn}
Description:	This mouse line was made by RMCE in the Rosa26[LCA] allele and has a cyan fluorescent protein (CFP, Cerulean) expressed under the control of the ROSA26 promoter. The CFP sequence is preceded by a translational enhancer and followed by intron-containing rabbit beta-globin polyA sequences. This mouse has ubiquitously expressed CFP protein and can be used for transplantation and other experiments where tracing of source cells is required.
Categories:	Fluorescent Probes


Genetic Alterations

1) RMCE Targeted Mutagenesis					
Type of Allele	Cassette Acceptor				
Targeted Gene	gene trap ROSA 26, Philippe Soriano (Gt(ROSA)26Sor - NCBI GeneID:14910)				
Targeted Allele	targeted mutation 1 (Rosa26 ^{tm1(LCA)} - MGI:104735)				
Description of Targeting Vector	Not available				
Targeting Vector Genbank File	pRosa26.LCA.gb				
Recombinase-Mediated Cassette Exchange Stage					
Type of Allele:	Global Null				
Exchanged Cassette Gene	Not provided.				
Exchanged Cassette Allele Name	CFP				
Description of Exchange Vector	The pRosa.EN.CFP.bGspliceA.Neo exchange vector was made on a backbone of a basal exchange vector which contains a 4.081 kb sequence from the Rosa26 locus, Lox71/Lox2272 sites, and a flrted (flanked by FRT) P _{gk} -Neo cassette that is used for positive selection of ES cells after RMCE. A 5' translational enhancer-CFP-intron-containing rabbit beta-globin polyA sequence was inserted (in place of Rosa26 exon 1), between the Lox71 and the P _{gk} -Neo sites.				
Exchange Vector Genbank File:	prosa.en.cfp.bgsplicea.neo.gb				
Citations	<table border="1"> <thead> <tr> <th>PubMedID</th> <th>Citation</th> </tr> </thead> <tbody> <tr> <td>21324933</td> <td>Quantification of factors influencing fluorescent protein expression using RMCE to generate an allelic series in the ROSA26 locus in mice. (2011) <i>Dis Model Mech</i> 4: 537-47 (Added 2012-09-24 16:36:23.369844)</td> </tr> </tbody> </table>	PubMedID	Citation	21324933	Quantification of factors influencing fluorescent protein expression using RMCE to generate an allelic series in the ROSA26 locus in mice. (2011) <i>Dis Model Mech</i> 4: 537-47 (Added 2012-09-24 16:36:23.369844)
PubMedID	Citation				
21324933	Quantification of factors influencing fluorescent protein expression using RMCE to generate an allelic series in the ROSA26 locus in mice. (2011) <i>Dis Model Mech</i> 4: 537-47 (Added 2012-09-24 16:36:23.369844)				


Strain Information

Strain Type:	Mixed
Chimera/Founder Genetic Background:	129S6/SvEvTac
Current Genetic Background:	C57BL/6J (date recorded: 07/31/2012)

Access Status

 This resource is publicly viewable.


Request this Resource


 Request from a repository

Primary contributor: [Magnuson Lab](#)

Resource Tags

Cerulean, CFP, mouse, mouse strain, Rosa26^{(CFP)Mgn}, Rosa26^{tm3Mgn}

 Login to edit tags

 Read more about tags

Resource History & Actions

Approved on Dec 21, 2011
Last modified on Jul 31, 2012

 Login to edit or request an edit

Related resources**BCBC**

No matching resources

Other Consortia

No matching resources

Data courtesy of [dkCOIN](#). Only public resources are displayed.

Strain Description: Not provided

Associated Images

Image 1

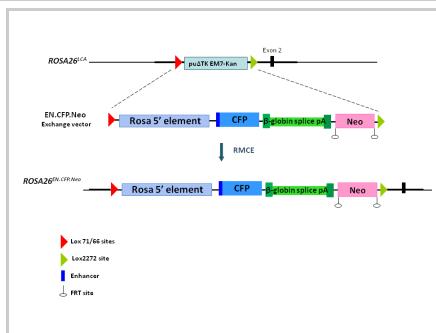
Description:
Not providedReference:
Not provided

Image 2

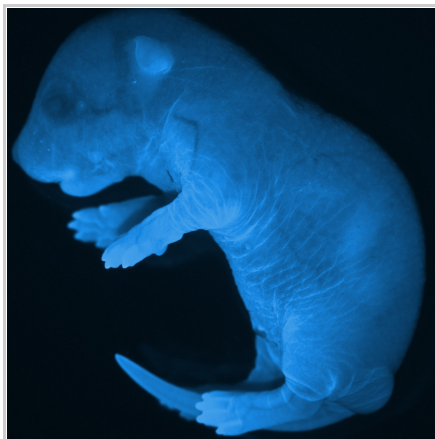
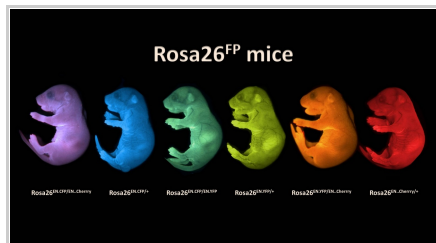
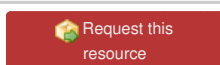
Description:
The image of Rosa26^{CFP/+} mouse was taken with a stereoscope using CFP filter.Reference:
Not provided

Image 3

Description:
The images of newborn offspring from intercrosses of Rosa26^{Cherry/+}, Rosa26^{CFP/+} and Rosa26^{YFP/+} mice were taken with a stereoscope using CFP, YFP and RFP filter and subsequently overlaid.Reference:
Not provided

Repositories

Magnuson Lab

Stock #: Not provided
Availability Notes: Not provided

MMRRC

Stock #: 036288-MU
Availability Notes: Not provided

Contact Information

Preferred Contact


Name	Mark Magnuson
Institution	Vanderbilt University
Phone	615-322-7006
Email	mark.magnuson@vanderbilt.edu

Associated Publications

No publications associated

Comments

There are no comments for this entry.

 Login to add
comments

[Home](#) · [Your Account](#) · [News & Events](#) · [Resources](#) · [Policies & Guidelines](#) · [About Us](#) · [FAQ](#) · [Site Map](#)

© 2002-2015 Beta Cell Biology Consortium - All Rights Reserved. [Terms of usage and disclaimer.](#)

