

**My Account**

[Login](#)  
[Create Account](#)

**Resources**

[View All \(813\)](#)  
[Adenoviruses \(137\)](#)  
[Antibodies \(175\)](#)  
[Bioimages \(67\)](#)  
[Genomics Studies \(145\)](#)  
[mESC Lines \(68\)](#)  
[Mouse Strains \(120\)](#)  
[Miscellaneous \(46\)](#)  
[Protocols \(55\)](#)  
[Research Data \(4\)](#)  
[Resource Tags \(389\)](#)  
[Visualization \(9\)](#)

**Research & Cores**

[Core Facilities \(5\)](#)  
[Research Highlights \(5\)](#)  
[Research Networks](#)  
[Research Objectives](#)

**Information**

[About the BCBC](#)  
[BCBC Events](#)  
[Branding & Logos](#)  
[Career Opportunities](#)  
[Health](#)  
[NIH hESC Registry](#)  
[Policies & Guidelines](#)  
[Member Publications](#)  
[Research Programs](#)  
[Research Investigators](#)  
[Member Directory](#)  
[Tutorials](#)

**Monoclonal Rat Beta cell, IC2 raised in Rat - Antibody RES4134****Antibody Information**

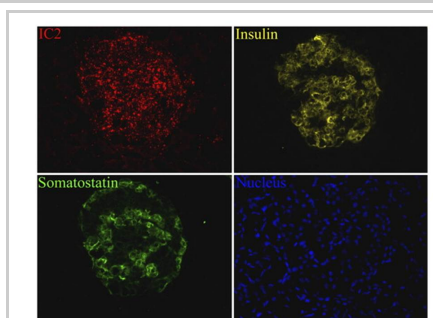
<b>Antibody ID:</b>	AB3274
<b>Antigen:</b>	Beta cell, IC2 ( <i>No Gene ID associated</i> )
<b>Type:</b>	Monoclonal
<b>Isotype:</b>	IgM
<b>Immunogen Source:</b>	BB rat auto-reactive lymphocytes
<b>Raised In:</b>	Rat
<b>Peptide:</b>	<i>Not provided</i>
<b>Source of Antigen:</b>	Rat
<b>Cross Reacts With:</b>	Rat,Human
<b>Affinity Purified:</b>	Supernatant
<b>Purity Details:</b>	<i>Not provided</i>
<b>Positive Control:</b>	<i>Not provided</i>
<b>Notes:</b>	<i>Not provided</i>

**Applications and Uses**

Application	Concentration	Storage Buffer	Protocols and Description
IHC	1 µg/ml	PBS	Description: Staining was performed by first incubating coverslips with 1 µg/ml of IC2 antibody for 2 h at RT and then with Alexa Fluor 594-labeled goat anti-rat IgM (1:500 dilution, Invitrogen) Protocols:

**Associated Images**

## Image 1

**Description:**

Immunostaining with IC2. Cryosections of human pancreas were stained with IC2 along with insulin and somatostatin or glucagon and observed under a fluorescence microscope.

**Reference:**

21747097

**Repositories**

## Immunosigns

 Request via [www.immunosigns.com/](http://www.immunosigns.com/) website


**Stock #:** *Not provided*  
**Availability Notes:** *Not provided*

**Contact Information**


## Preferred Contact

<b>Name</b>	Carl-Henrik Brogren
<b>Institution</b>	University of Copenhagen
<b>Phone</b>	+45 2041 6249
<b>Email</b>	<a href="mailto:henrik@brogren.dk">henrik@brogren.dk</a>

**Access Status**

 This resource is publicly viewable.

**Request this Resource**

 Request from a repository

Primary contributor: [Antibody Core](#)

(Retired)


Co-contributed by:

- [Antibody Core \(USA\)](#)

**Resource Tags**


antibody, Beta cell, IC2 Monoclonal, Rat

 Login to edit tags

 Read more about tags

**Resource History & Actions**

Approved on  
Last modified on Nov 07, 2011

 Login to edit or request an edit

**Related resources****BCBC**

*No matching resources*

**Other Consortia**

*No matching resources*

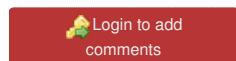
Data courtesy of [dkCOIN](#). Only public resources are displayed.

## Associated Publications

Publication	Citation
<a href="#">21747097</a>	Kavishwar A, Medarova Z, Moore A <a href="#">Unique sphingomyelin patches are targets of a beta-cell-specific antibody.</a> (2011) <i>J Lipid Res</i> <b>52</b> : 1660-71 (Added February 09, 2012)
<a href="#">11574403</a>	Moore A, Bonner-Weir S, Weissleder R <a href="#">Noninvasive in vivo measurement of beta-cell mass in mouse model of diabetes.</a> (2001) <i>Diabetes</i> <b>50</b> : 2231-6 (Added September 29, 2011)
<a href="#">3522331</a>	Brogren CH, Hirsch F, Wood P, Druet P, Poussier P <a href="#">Production and characterization of a monoclonal islet cell surface autoantibody from the BB rat.</a> (1986) <i>Diabetologia</i> <b>29</b> : 330-3 (Added September 29, 2011)

## Comments

There are no comments for this entry.



[Home](#) · [Your Account](#) · [News & Events](#) · [Resources](#) · [Policies & Guidelines](#) · [About Us](#) · [FAQ](#) · [Site Map](#)

© 2002-2015 Beta Cell Biology Consortium - All Rights Reserved. [Terms of usage and disclaimer.](#)

