

My Account

[Login](#)
[Create Account](#)

Resources

[View All \(813\)](#)
[Adenoviruses \(137\)](#)
[Antibodies \(175\)](#)
[Bioimages \(67\)](#)
[Genomics Studies \(145\)](#)
[mESC Lines \(68\)](#)
[Mouse Strains \(120\)](#)
[Miscellaneous \(46\)](#)
[Protocols \(55\)](#)
[Research Data \(4\)](#)
[Resource Tags \(389\)](#)
[Visualization \(9\)](#)

Research & Cores

[Core Facilities \(5\)](#)
[Research Highlights \(5\)](#)
[Research Networks](#)
[Research Objectives](#)

Information

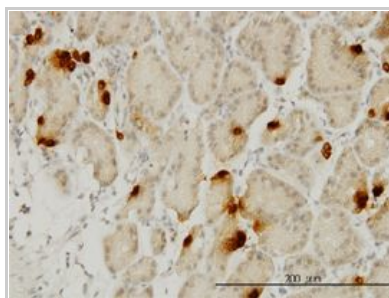
[About the BCBC](#)
[BCBC Events](#)
[Branding & Logos](#)
[Career Opportunities](#)
[Health](#)
[NIH hESC Registry](#)
[Policies & Guidelines](#)
[Member Publications](#)
[Research Programs](#)
[Research Investigators](#)
[Member Directory](#)
[Tutorials](#)

Monoclonal Human ghrelin raised in Mouse - Antibody RES4563**Antibody Information**

Antibody ID:	AB3994
Antigen:	ghrelin (NCBI Gene ID: 51738)
Type:	Monoclonal
Isotype:	IgG2a
Immunogen Source:	Purified Protein
Raised In:	Mouse
Peptide:	<i>Not provided</i>
Source of Antigen:	Human
Cross Reacts With:	Human
Affinity Purified:	Affinity Purified
Purity Details:	<i>Not provided</i>
Positive Control:	Hela cell lysate
Notes:	<i>Not provided</i>

Applications and Uses

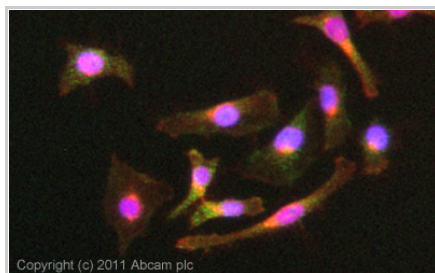
Application	Concentration	Storage Buffer	Protocols and Description
IHC-P	3 µg/ml	PBS, pH 7.2	Description: <i>Not provided</i> Protocols:
WB	1 - 5 µg/ml	PBS, pH 7.2	Description: <i>Not provided</i> Protocols:
ICC/IF	5 µg/ml	PBS, pH 7.2	Description: <i>Not provided</i> Protocols:

Associated Images**Image 1****Description:**

Ghrelin antibody (ab57222) used in immunohistochemistry at 3µg/ml on formalin fixed and paraffin embedded human stomach.


Reference:

AbCam (ab57222)


Image 2**Description:**

ICC/IF image of ab57222 stained HeLa cells. The cells were 4% formaldehyde (10 min) and then incubated in 1%BSA / 10% normal goat serum / 0.3M glycine in 0.1% PBS-Tween for 1h to permeabilise the cells and block non-specific protein-protein interactions. The cells were then incubated with the antibody (ab57222, 5µg/ml) overnight at +4 °C. The secondary antibody (green) was ab96879 Dylight 488 goat anti-mouse IgG (H+L)

Access Status

 This resource is publicly viewable.


Request this Resource


 Request from a repository

Primary contributor: [Jean-Philippe Cartailier](#)

Resource Tags

antibody, ghrelin, Human, Monoclonal

 Login to edit tags

 Read more about tags

Resource History & Actions

Approved on
Last modified on Feb 21, 2013

 Login to edit or request an edit

Related resources**BCBC**

No matching resources

Other Consortia

No matching resources

Data courtesy of [dkCOIN](#). Only public resources are displayed.

used at a 1/250 dilution for 1h.
Alexa Fluor® 594 WGA was used to label plasma membranes (red) at a 1/200 dilution for 1h. DAPI was used to stain the cell nuclei (blue) at a concentration of 1.43µM.

Reference:
AbCam (ab57222)

Repositories

AbCam

 Request via www.abcam.com website

Stock #: ab57222

Availability Notes: *Not provided*

Contact Information

Preferred Contact

Name abcam

Institution *Not provided*

Phone (888) 77-ABCAM (22226)


Email us.orders@abcam.com

Associated Publications

No publications associated

Comments

There are no comments for this entry.

 Login to add comments

[Home](#) · [Your Account](#) · [News & Events](#) · [Resources](#) · [Policies & Guidelines](#) · [About Us](#) · [FAQ](#) · [Site Map](#)

© 2002-2015 Beta Cell Biology Consortium - All Rights Reserved. [Terms of usage and disclaimer](#).

