

## My Account

Login  
Create Account

## Resources

View All (813)  
Adenoviruses (137)  
Antibodies (175)  
Bioimages (67)  
Genomics Studies (145)  
mESC Lines (68)  
Mouse Strains (120)  
Miscellaneous (46)  
Protocols (55)  
Research Data (4)  
Resource Tags (389)  
Visualization (9)

## Research &amp; Cores

Core Facilities (5)  
Research Highlights (5)  
Research Networks  
Research Objectives

## Information

About the BCBC  
BCBC Events  
Branding & Logos  
Career Opportunities  
Health  
NIH hESC Registry  
Policies & Guidelines  
Member Publications  
Research Programs  
Research Investigators  
Member Directory  
Tutorials

## Monoclonal Mouse Mo ES-Derived Early Endoderm raised in Rat - Antibody RES901

### Antibody Information

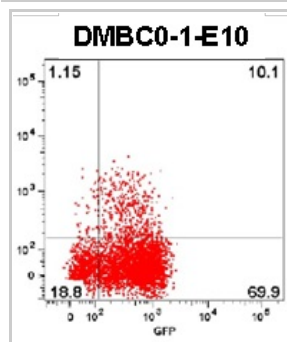
Antibody ID:	AB2473
Antigen:	Mo ES-Derived Early Endoderm ( <i>No Gene ID associated</i> )
Type:	Monoclonal
Isotype:	IgG1
Immunogen Source:	Cells
Raised In:	Rat
Peptide:	<i>Not provided</i>
Source of Antigen:	Mouse
Cross Reacts With:	Mouse
Affinity Purified:	Supernatant
Purity Details:	<i>Not provided</i>
Positive Control:	ES-derived early endoderm
Notes:	This antibody was raised against Foxa2+Bry+ cells isolated from mouse ES cell cultures differentiated for 4 days in the presence of human Activin A (25-50 ng/ml) and mouse Wnt3a (3-5 ng/ml). This antibody has been shown to react with a cell surface molecule on a subset of mouse Foxa2+Bry+ cells, but has not been extensively evaluated on ES cells or ES cells differentiated to alternate lineages.

### Applications and Uses

Application	Concentration	Storage Buffer	Protocols and Description
FACS	Undiluted	As provided	Description: This antibody reacts with a cell surface molecule on a subset of Foxa2+Bry+ cells derived from mouse ES cell cultures differentiated for 4 days in the presence of human Activin A (25-50 ng/ml) and mouse Wnt3a (3-5 ng/ml). Cells expressing the molecule can be detected by FACS. Protocols:

### Associated Images

## Image 1



## Description:

This figure illustrates staining of a subset of Foxa2+Bry+ cells with this antibody. Cells were incubated with the monoclonal antibody, washed, then incubated with an allophycocyanin-conjugated donkey anti-rat-Ig.

## Reference:


*Not provided*

### Repositories


BCBC members may [Login](#) to request this resource.

### Contact Information

### Access Status

 This resource is publicly viewable.

### Request this Resource

 Request from a repository


Primary contributor: [Grompe Lab](#)

Co-contributed by:

- [Streeter Lab](#)
- [Keller Lab](#)

### Resource Tags

antibody, Mo ES-Derived Early Endoderm, Monoclonal, Mouse

 Login to edit tags

 Read more about tags

### Resource History & Actions

Approved on  
Last modified on Feb 10, 2009

 Login to edit or request an edit

### Related resources

#### BCBC

*No matching resources*

#### Other Consortia

*No matching resources*

Data courtesy of [dkCOIN](#). Only public resources are displayed.

**Preferred Contact**


<b>Name</b>	Philip Streeter
<b>Institution</b>	Oregon Health & Science University
<b>Phone</b>	503-494-1762
<b>Email</b>	<a href="mailto:streetep@ohsu.edu">streetep@ohsu.edu</a>

**Associated Publications**

*No publications associated*

**Comments**

*There are no comments for this entry.*

 Login to add comments

[Home](#) · [Your Account](#) · [News & Events](#) · [Resources](#) · [Policies & Guidelines](#) · [About Us](#) · [FAQ](#) · [Site Map](#)

© 2002-2015 Beta Cell Biology Consortium - All Rights Reserved. [Terms of usage and disclaimer.](#)

