

**My Account**

[Login](#)  
[Create Account](#)

**Resources**

[View All \(813\)](#)  
[Adenoviruses \(137\)](#)  
[Antibodies \(175\)](#)  
[Bioimages \(67\)](#)  
[Genomics Studies \(145\)](#)  
[mESC Lines \(68\)](#)  
[Mouse Strains \(120\)](#)  
[Miscellaneous \(46\)](#)  
[Protocols \(55\)](#)  
[Research Data \(4\)](#)  
[Resource Tags \(389\)](#)  
[Visualization \(9\)](#)

**Research & Cores**

[Core Facilities \(5\)](#)  
[Research Highlights \(5\)](#)  
[Research Networks](#)  
[Research Objectives](#)

**Information**

[About the BCBC](#)  
[BCBC Events](#)  
[Branding & Logos](#)  
[Career Opportunities](#)  
[Health](#)  
[NIH hESC Registry](#)  
[Policies & Guidelines](#)  
[Member Publications](#)  
[Research Programs](#)  
[Research Investigators](#)  
[Member Directory](#)  
[Tutorials](#)

## Monoclonal Mouse Mo ES-Derived Early Endoderm raised in Rat - Antibody RES906

**Antibody Information**

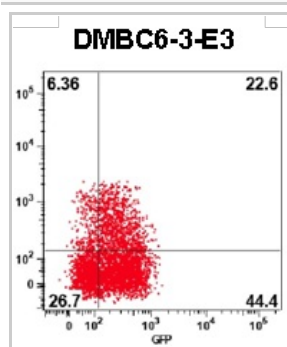
<b>Antibody ID:</b>	AB2478
<b>Antigen:</b>	Mo ES-Derived Early Endoderm ( <i>No Gene ID associated</i> )
<b>Type:</b>	Monoclonal
<b>Isotype:</b>	IgG2a
<b>Immunogen Source:</b>	Cells
<b>Raised In:</b>	Rat
<b>Peptide:</b>	<i>Not provided</i>
<b>Source of Antigen:</b>	Mouse
<b>Cross Reacts With:</b>	Mouse
<b>Affinity Purified:</b>	Supernatant
<b>Purity Details:</b>	<i>Not provided</i>
<b>Positive Control:</b>	ES-derived early endoderm
<b>Notes:</b>	This antibody was raised against Foxa2+Bry+ cells isolated from mouse ES cell cultures differentiated for 4 days in the presence of human Activin A (25-50 ng/ml) and mouse Wnt3a (3-5 ng/ml). This antibody has been shown to react with a cell surface molecule on a subset of mouse Foxa2+Bry+ cells, but has not been extensively evaluated on ES cells or ES cells differentiated to alternate lineages.

**Applications and Uses**

Application	Concentration	Storage Buffer	Protocols and Description
FACS	Undiluted	As provided	Description: This antibody reacts with a cell surface molecule on a subset of Foxa2+Bry+ cells derived from mouse ES cell cultures differentiated for 4 days in the presence of human Activin A (25-50 ng/ml) and mouse Wnt3a (3-5 ng/ml). Cells expressing the molecule can be detected by FACS. Protocols:

**Associated Images**

Image 1

**Description:**

This figure illustrates staining of a subset of Foxa2+Bry+ cells with this antibody. Cells were incubated with the monoclonal antibody, washed, then incubated with an allophycocyanin-conjugated donkey anti-rat-Ig.


**Reference:**

*Not provided*


**Repositories**

BCBC members may [Login](#) to request this resource.

**Contact Information****Access Status**

 This resource is publicly viewable.

**Request this Resource**

 [Request from a repository](#)


Primary contributor: [Grompe Lab](#)

Co-contributed by:

- [Streeter Lab](#)
- [Keller Lab](#)

**Resource Tags**

antibody, Mo ES-Derived Early Endoderm, Monoclonal, Mouse


 [Login to edit tags](#)

 [Read more about tags](#)

**Resource History & Actions**

Approved on

Last modified on Feb 10, 2009

 [Login to edit or request an edit](#)

**Related resources****BCBC**

*No matching resources*

**Other Consortia**

*No matching resources*

Data courtesy of [dkCOIN](#). Only public resources are displayed.

**Preferred Contact**


<b>Name</b>	Philip Streeter
<b>Institution</b>	Oregon Health & Science University
<b>Phone</b>	503-494-1762
<b>Email</b>	<a href="mailto:streetep@ohsu.edu">streetep@ohsu.edu</a>

**Associated Publications**

*No publications associated*

**Comments**

*There are no comments for this entry.*

 Login to add comments

[Home](#) · [Your Account](#) · [News & Events](#) · [Resources](#) · [Policies & Guidelines](#) · [About Us](#) · [FAQ](#) · [Site Map](#)

© 2002-2015 Beta Cell Biology Consortium - All Rights Reserved. [Terms of usage and disclaimer.](#)

