

My Account[Login](#)[Create Account](#)**Resources**[View All \(813\)](#)[Adenoviruses \(137\)](#)[Antibodies \(175\)](#)[Bioimages \(67\)](#)[Genomics Studies \(145\)](#)[mESC Lines \(68\)](#)[Mouse Strains \(120\)](#)[Miscellaneous \(46\)](#)[Protocols \(55\)](#)[Research Data \(4\)](#)[Resource Tags \(389\)](#)[Visualization \(9\)](#)**Research & Cores**[Core Facilities \(5\)](#)[Research Highlights \(5\)](#)[Research Networks](#)[Research Objectives](#)**Information**[About the BCBC](#)[BCBC Events](#)[Branding & Logos](#)[Career Opportunities](#)[Health](#)[NIH hESC Registry](#)[Policies & Guidelines](#)[Member Publications](#)[Research Programs](#)[Research Investigators](#)[Member Directory](#)[Tutorials](#)

Monoclonal Mouse Mo ES-Derived Early Endoderm raised in Rat - Antibody RES908

Antibody Information

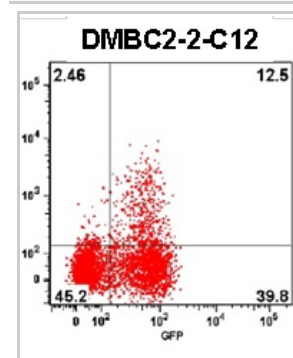
Antibody ID:	AB2480
Antigen:	Mo ES-Derived Early Endoderm <i>(No Gene ID associated)</i>
Type:	Monoclonal
Isotype:	IgG2a
Immunogen Source:	Cells
Raised In:	Rat
Peptide:	<i>Not provided</i>
Source of Antigen:	Mouse
Cross Reacts With:	Mouse
Affinity Purified:	Supernatant
Purity Details:	<i>Not provided</i>
Positive Control:	ES-derived early endoderm
Notes:	This antibody was raised against Foxa2+Foxa3+ cells isolated from mouse ES cell cultures differentiated for 6 days in the presence of human Activin A (25-50 ng/ml) and mouse Wnt3a (3-5 ng/ml). This antibody has been shown to react with a cell surface molecule on a subset of mouse Foxa2+Bry+ cells, but has not been extensively evaluated on ES cells or ES cells differentiated to alternate lineages.

Applications and Uses

Application	Concentration	Storage Buffer	Protocols and Description
FACS	Undiluted	As provided	Description: This antibody reacts with a cell surface molecule on a subset of Foxa2+Bry+ cells derived from mouse ES cell cultures differentiated for 4 days in the presence of human Activin A (25-50 ng/ml) and mouse Wnt3a (3-5 ng/ml). Cells expressing the molecule can be detected by FACS. Protocols:

Associated Images

Image 1

**Description:**

This figure illustrates staining of a subset of Foxa2+Bry+ cells with this antibody. Cells were incubated with the monoclonal antibody, washed, then incubated with an allophycocyanin-conjugated donkey anti-rat-Ig.


Reference:

Not provided


Repositories

BCBC members may [Login](#) to request this resource.

Access Status

 This resource is publicly viewable.

Request this Resource

 Request from a repository


Primary contributor: [Grompe Lab](#)

Co-contributed by:

- [Streeter Lab](#)
- [Keller Lab](#)

Resource Tags

antibody, Mo ES-Derived Early Endoderm, Monoclonal, Mouse


 Login to edit tags

 Read more about tags

Resource History & Actions

Approved on

Last modified on Feb 10, 2009

 Login to edit or request an edit

Related resources**BCBC**

No matching resources

Other Consortia

No matching resources

Data courtesy of [dkCOIN](#). Only public resources are displayed.

Contact Information

Preferred Contact

Name	Philip Streeter
Institution	Oregon Health & Science University
Phone	503-494-1762
Email	streetep@ohsu.edu

Associated Publications

No publications associated

Comments

There are no comments for this entry.



[Home](#) · [Your Account](#) · [News & Events](#) · [Resources](#) · [Policies & Guidelines](#) · [About Us](#) · [FAQ](#) · [Site Map](#)

© 2002-2015 Beta Cell Biology Consortium - All Rights Reserved. [Terms of usage and disclaimer.](#)

