

My Account

[Login](#)
[Create Account](#)

Resources

[View All \(813\)](#)
[Adenoviruses \(137\)](#)
[Antibodies \(175\)](#)
[Bioimages \(67\)](#)
[Genomics Studies \(145\)](#)
[mESC Lines \(68\)](#)
[Mouse Strains \(120\)](#)
[Miscellaneous \(46\)](#)
[Protocols \(55\)](#)
[Research Data \(4\)](#)
[Resource Tags \(389\)](#)
[Visualization \(9\)](#)

Research & Cores

[Core Facilities \(5\)](#)
[Research Highlights \(5\)](#)
[Research Networks](#)
[Research Objectives](#)

Information

[About the BCBC](#)
[BCBC Events](#)
[Branding & Logos](#)
[Career Opportunities](#)
[Health](#)
[NIH hESC Registry](#)
[Policies & Guidelines](#)
[Member Publications](#)
[Research Programs](#)
[Research Investigators](#)
[Member Directory](#)
[Tutorials](#)

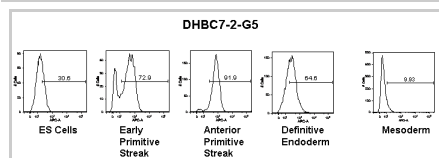
Monoclonal Human Hu ES-Derived Early Endoderm raised in Mouse - Antibody RES941

Antibody Information

Antibody ID:	AB2513
Antigen:	Hu ES-Derived Early Endoderm (<i>No Gene ID associated</i>)
Type:	Monoclonal
Isotype:	IgG1
Immunogen Source:	Cells
Raised In:	Mouse
Peptide:	<i>Not provided</i>
Source of Antigen:	Human
Cross Reacts With:	Human
Affinity Purified:	Supernatant
Purity Details:	<i>Not provided</i>
Positive Control:	Human ES-Derived Early Endoderm
Notes:	The following is a preliminary discussion of the specificity of the reported antibody. This antibody was raised against day 6 early endoderm generated from human ES cells. This antibody has been found to selectively react with a cell surface molecule on human ES-derived cultures enriched for early primitive streak and anterior primitive streak, and to a lesser extent on ES cells and definitive endoderm, and not with mesoderm.

Applications and Uses

Application	Concentration	Storage Buffer	Protocols and Description
FACS	Undiluted	As provided	Description: This antibody was raised against day 6 early endoderm generated from human ES cells. This antibody has been found to selectively react with a cell surface molecule on human ES-derived cultures enriched for early primitive streak and anterior primitive streak. Cells expressing the molecule can be detected by FACS. Protocols:

Associated Images**Image 1****Description:**

This figure illustrates staining of a subset of cells in human ES-derived cultures enriched for early primitive streak and anterior primitive streak. Cells were incubated with the monoclonal antibody, washed, then incubated with an allophycocyanin-conjugated anti-mouse-Ig.


Reference:

Not provided


Repositories

BCBC members may [Login](#) to request this resource.

Contact Information**Access Status**

 This resource is publicly viewable.

Request this Resource

 Request from a repository

Primary contributor: [Grompe Lab](#)

Co-contributed by:

- [Streeter Lab](#)
- [Keller Lab](#)

Resource Tags

antibody, Hu ES-Derived Early Endoderm, Human, Monoclonal


 Login to edit tags

 Read more about tags

Resource History & Actions

Approved on

Last modified on Feb 10, 2009

 Login to edit or request an edit

Related resources**BCBC**

No matching resources

Other Consortia

No matching resources

Data courtesy of [dkCOIN](#). Only public resources are displayed.

Preferred Contact

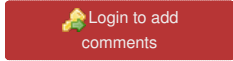
Name	Philip Streeter
Institution	Oregon Health & Science University
Phone	503-494-1762
Email	streetep@ohsu.edu

Associated Publications

No publications associated

Comments

There are no comments for this entry.



[Home](#) · [Your Account](#) · [News & Events](#) · [Resources](#) · [Policies & Guidelines](#) · [About Us](#) · [FAQ](#) · [Site Map](#)

© 2002-2015 Beta Cell Biology Consortium - All Rights Reserved. [Terms of usage and disclaimer](#).

