

My Account

[Login](#)
[Create Account](#)

Resources

[View All \(813\)](#)
[Adenoviruses \(137\)](#)
[Antibodies \(175\)](#)
[Bioimages \(67\)](#)
[Genomics Studies \(145\)](#)
[mESC Lines \(68\)](#)
[Mouse Strains \(120\)](#)
[Miscellaneous \(46\)](#)
[Protocols \(55\)](#)
[Research Data \(4\)](#)
[Resource Tags \(389\)](#)
[Visualization \(9\)](#)

Research & Cores

[Core Facilities \(5\)](#)
[Research Highlights \(5\)](#)
[Research Networks](#)
[Research Objectives](#)

Information

[About the BCBC](#)
[BCBC Events](#)
[Branding & Logos](#)
[Career Opportunities](#)
[Health](#)
[NIH hESC Registry](#)
[Policies & Guidelines](#)
[Member Publications](#)
[Research Programs](#)
[Research Investigators](#)
[Member Directory](#)
[Tutorials](#)

Monoclonal Mouse Pancreatic duct cells raised in Rat - Antibody RES942**Antibody Information**

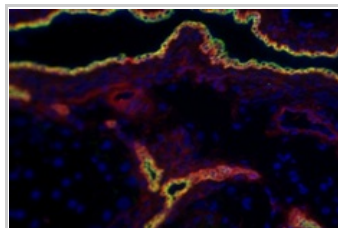
Antibody ID:	AB2514
Antigen:	Pancreatic duct cells (<i>No Gene ID associated</i>)
Type:	Monoclonal
Isotype:	IgG1
Immunogen Source:	Cells
Raised In:	Rat
Peptide:	<i>Not provided</i>
Source of Antigen:	Mouse
Cross Reacts With:	Mouse
Affinity Purified:	Supernatant
Purity Details:	<i>Not provided</i>
Positive Control:	Mouse pancreas
Notes:	This antibody was generated following immunization of rats with enriched mouse islets. The antibody was found to react with a cell surface molecule on duct cells in both the pancreas and the liver.

Applications and Uses

Application	Concentration	Storage Buffer	Protocols and Description
IHC-AF	Undiluted	As provided	Description: This antibody was raised against enzyme dispersed mouse pancreas. This antibody has been found to selectively react with a cell surface molecule on mouse pancreatic and liver duct cells. Cells expressing the molecule can be detected in tissue sections by immunohistochemistry. Protocols:
FACS	Undiluted	As provided	Description: This antibody was raised against enzyme dispersed mouse pancreas. This antibody has been found to selectively react with a cell surface molecule on mouse pancreatic and liver duct cells. Cells expressing the molecule can be detected by FACS. Protocols:

Associated Images

Image 1



Description:
Frozen section of mouse pancreas illustrating reactivity of MIC1-1-C3 (red) and anti-cytokeratin 19 (green) with duct cell populations. Co-staining appears yellow.

Reference:
Not provided


Repositories

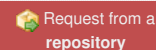
Streeter Lab



Stock #: *Not provided*
Availability Notes: *Not provided*

Contact Information**Access Status**

 This resource is publicly viewable.

Request this Resource

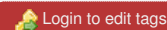
Primary contributor: [Grompe Lab](#)

Co-contributed by:

- [Streeter Lab](#)
- [Keller Lab](#)

Resource Tags

antibody, Monoclonal, Mouse, Pancreatic duct cells



 [Read more about tags](#)

Resource History & Actions

Approved on
Last modified on Feb 10, 2009

**Related resources****BCBC**

No matching resources

Other Consortia

No matching resources

Data courtesy of [dkCOIN](#). Only public resources are displayed.

Preferred Contact


Name	Philip Streeter
Institution	Oregon Health & Science University
Phone	503-494-1762
Email	streetep@ohsu.edu

Associated Publications

No publications associated

Comments

There are no comments for this entry.

 [Login to add comments](#)

