

My Account

[Login](#)
[Create Account](#)

Resources

[View All \(813\)](#)
[Adenoviruses \(137\)](#)
[Antibodies \(175\)](#)
[Bioimages \(67\)](#)
[Genomics Studies \(145\)](#)
[mESC Lines \(68\)](#)
[Mouse Strains \(120\)](#)
[Miscellaneous \(46\)](#)
[Protocols \(55\)](#)
[Research Data \(4\)](#)
[Resource Tags \(389\)](#)
[Visualization \(9\)](#)

Research & Cores

[Core Facilities \(5\)](#)
[Research Highlights \(5\)](#)
[Research Networks](#)
[Research Objectives](#)

Information

[About the BCBC](#)
[BCBC Events](#)
[Branding & Logos](#)
[Career Opportunities](#)
[Health](#)
[NIH hESC Registry](#)
[Policies & Guidelines](#)
[Member Publications](#)
[Research Programs](#)
[Research Investigators](#)
[Member Directory](#)
[Tutorials](#)

Monoclonal Mouse BetaTC6 raised in Mouse - Antibody RES961**Antibody Information**

Antibody ID:	AB2533
Antigen:	BetaTC6 <i>(No Gene ID associated)</i>
Type:	Monoclonal
Isotype:	IgG2a
Immunogen Source:	BetaTC6 cell line
Raised In:	Mouse
Peptide:	<i>Not provided</i>
Source of Antigen:	Mouse
Cross Reacts With:	Mouse,Rat
Affinity Purified:	Purified
Purity Details:	Protein A purified
Positive Control:	BetaTC6 cells
Notes:	<i>Not provided</i>

Applications and Uses

Application	Concentration	Storage Buffer	Protocols and Description
FACS	10 microgram/ml	PBS	Description: Cells are incubated 30 min (cold) with diluted antibody, washed two times, incubated 30 min (cold) with appropriate secondary reagent, washed and fixed with PFA followed by FACS analysis Protocols:

Associated Images

Image 1

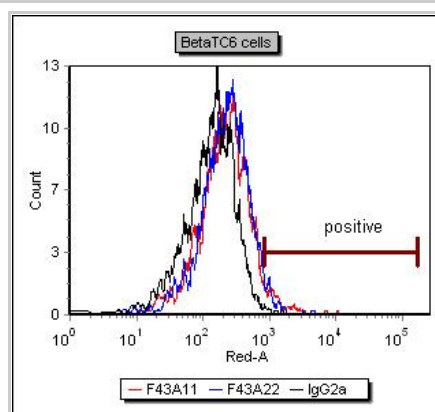


Image 2


Description:
Binding of F43A22 and F43A11 to BetaTC6 cells compared to isotype control (IgG2a)

Reference:
Anne Ejrnaes Sprinkel


Description:
Binding of F43A22 and F43A11 to BetaTC3 cells compared to isotype control (IgG2a).

Reference:
Anne Ejrnaes Sprinkel

Access Status

 This resource is publicly viewable.

Request this Resource

 Request from a repository

Primary contributor: [Antibody Core](#)


(Retired)


Co-contributed by:

- [Antibody Core \(USA\)](#)

Resource Tags


AbCore, antibody, BetaTC6, Monoclonal, Mouse

 Login to edit tags

 Read more about tags

Resource History & Actions

Approved on
Last modified on Feb 11, 2009

 Login to edit or request an edit

Related resources**BCBC**

No matching resources

Other Consortia

No matching resources

Data courtesy of [dkCOIN](#). Only public resources are displayed.

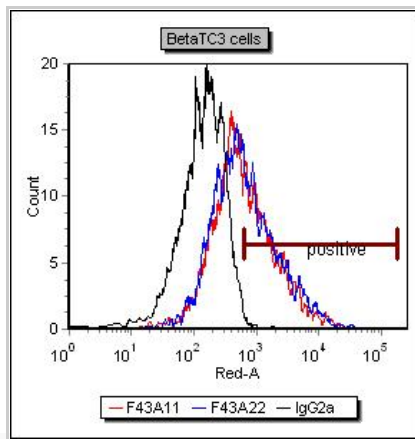
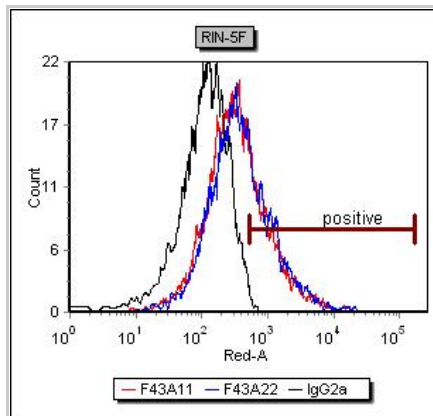


Image 3

**Description:**

Binding of F43A22 and F43A11 to RIN-5F cells compared to isotype control (IgG2a).

Reference:

Anne Ejrnaes Sprinkel

Repositories

BCBC members may [Login](#) to request this resource.

Contact Information**Preferred Contact**

Name	Ole Madsen
Institution	Hagedorn Research Institute
Phone	+45 4443 9197
Email	odm@hagedorn.dk

Associated Publications

No publications associated

Comments

There are no comments for this entry.

[Login to add comments](#)

