

**My Account**

[Login](#)  
[Create Account](#)

**Resources**

[View All \(813\)](#)  
[Adenoviruses \(137\)](#)  
[Antibodies \(175\)](#)  
[Bioimages \(67\)](#)  
[Genomics Studies \(145\)](#)  
[mESC Lines \(68\)](#)  
[Mouse Strains \(120\)](#)  
[Miscellaneous \(46\)](#)  
[Protocols \(55\)](#)  
[Research Data \(4\)](#)  
[Resource Tags \(389\)](#)  
[Visualization \(9\)](#)

**Research & Cores**

[Core Facilities \(5\)](#)  
[Research Highlights \(5\)](#)  
[Research Networks](#)  
[Research Objectives](#)

**Information**

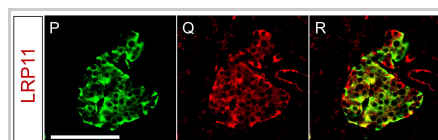
[About the BCBC](#)  
[BCBC Events](#)  
[Branding & Logos](#)  
[Career Opportunities](#)  
[Health](#)  
[NIH hESC Registry](#)  
[Policies & Guidelines](#)  
[Member Publications](#)  
[Research Programs](#)  
[Research Investigators](#)  
[Member Directory](#)  
[Tutorials](#)

**Polyclonal Mouse Lrp11 raised in Rabbit - Antibody RES966****Antibody Information**

<b>Antibody ID:</b>	AB2538
<b>Antigen:</b>	Lrp11 (NCBI Gene ID: <a href="#">237253</a> )
<b>Type:</b>	Polyclonal
<b>Isotype:</b>	Not Applicable
<b>Immunogen Source:</b>	Peptide
<b>Raised In:</b>	Rabbit
<b>Peptide:</b>	aa 55-73 coupled to KLH
<b>Source of Antigen:</b>	Mouse
<b>Cross Reacts With:</b>	Mouse, Human
<b>Affinity Purified:</b>	Serum
<b>Purity Details:</b>	<i>Not provided</i>
<b>Positive Control:</b>	adult mouse pancreas
<b>Notes:</b>	Surface marker. Cell type: Mature endocrine cells - for details: <a href="http://www.betacell.org/research/highlights/MADBETA/">http://www.betacell.org/research/highlights/MADBETA/</a> Best for human but also reacts to mouse

**Applications and Uses**

Application	Concentration	Storage Buffer	Protocols and Description
IHC	1:2000	Serum	Description: Used with TSA Protocols:

**Associated Images****Image 1**

**Description:**  
Human adult pancreas stained with Lrp11 (red) and insulin (green)

**Reference:**  
21947380

**Repositories**

BCBC members may [Login](#) to request this resource.

BCBC members may [Login](#) to request this resource.


**Contact Information****Preferred Contact**

<b>Name</b>	Michael Ray
<b>Institution</b>	Vanderbilt University
<b>Phone</b>	(615)343-8258
<b>Email</b>	<a href="mailto:michael.ray@vanderbilt.edu">michael.ray@vanderbilt.edu</a>


**Associated Publications**

Publication	Citation
<a href="#">21947380</a>	Hald J, Galbo T, Rescan C, Radzikowski L, Sprinkel AE, Heimberg H, Ahnfelt-Rønne J, Jensen J, Scharfmann R, Gradwohl G, Kaestner KH, Stoeckert C, Jensen JN, Madsen OD <a href="#">Pancreatic islet and progenitor cell surface markers</a>

**Access Status**

 This resource is publicly viewable.

**Request this Resource**


 Request from a repository


Primary contributor: [Antibody Core \(Retired\)](#)  
Co-contributed by:  

- [Antibody Core \(USA\)](#)

**Resource Tags**

AbCore, antibody, Lrp11, Mouse, Polyclonal

 Login to edit tags

 Read more about tags

**Resource History & Actions**

Approved on  
Last modified on Jun 22, 2012

 Login to edit or request an edit

**Related resources****BCBC**

*No matching resources*

**Other Consortia**

*No matching resources*

Data courtesy of [dkCOIN](#). Only public resources are displayed.


with cell sorting potential. (2012) *Diabetologia* 55: 154-65 (Added December 19, 2012)

---

## Comments

---

*There are no comments for this entry.*

 Login to add  
comments

[Home](#) · [Your Account](#) · [News & Events](#) · [Resources](#) · [Policies & Guidelines](#) · [About Us](#) · [FAQ](#) · [Site Map](#)

© 2002-2015 Beta Cell Biology Consortium - All Rights Reserved. [Terms of usage and disclaimer.](#)

