

My Account

[Login](#)
[Create Account](#)

Resources

[View All \(813\)](#)
[Adenoviruses \(137\)](#)
[Antibodies \(175\)](#)
[Bioimages \(67\)](#)
[Genomics Studies \(145\)](#)
[mESC Lines \(68\)](#)
[Mouse Strains \(120\)](#)
[Miscellaneous \(46\)](#)
[Protocols \(55\)](#)
[Research Data \(4\)](#)
[Resource Tags \(389\)](#)
[Visualization \(9\)](#)

Research & Cores

[Core Facilities \(5\)](#)
[Research Highlights \(5\)](#)
[Research Networks](#)
[Research Objectives](#)

Information

[About the BCBC](#)
[BCBC Events](#)
[Branding & Logos](#)
[Career Opportunities](#)
[Health](#)
[NIH hESC Registry](#)
[Policies & Guidelines](#)
[Member Publications](#)
[Research Programs](#)
[Research Investigators](#)
[Member Directory](#)
[Tutorials](#)

Polyclonal Mouse Sez6l2 raised in Rabbit - Antibody RES968**Antibody Information**

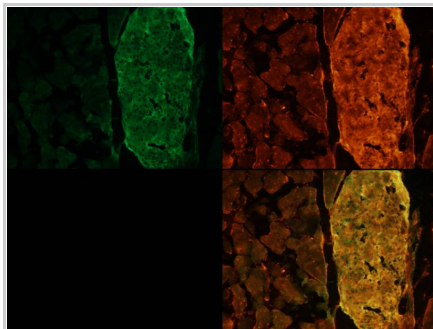
Antibody ID:	AB2540
Antigen:	Sez6l2 (NCBI Gene ID: 20370)
Type:	Polyclonal
Isotype:	Not Applicable
Immunogen Source:	Peptide
Raised In:	Rabbit
Peptide:	aa 491-507 coupled to KLH
Source of Antigen:	Mouse
Cross Reacts With:	Mouse
Affinity Purified:	Serum
Purity Details:	<i>Not provided</i>
Positive Control:	Adult mouse pancreas
Notes:	<i>Not provided</i>

Applications and Uses

Application	Concentration	Storage Buffer	Protocols and Description
IHC	<i>Not provided</i>	<i>Not provided</i>	Description: <i>Not provided</i> Protocols:

Associated Images

Image 1



Description:
Adult mouse pancreas with rabbit a- Sez6l2 2470A (red) and insulin (green).

Reference:
Jacob Hald, Hagedorn Research Institute

Repositories

BCBC members may [Login](#) to request this resource.

BCBC members may [Login](#) to request this resource.

Contact Information**Preferred Contact**

Name	Michael Ray
Institution	Vanderbilt University
Phone	(615)343-8258
Email	michael.ray@vanderbilt.edu

Associated Publications

Publication	Citation
21947380	Hald J, Galbo T, Rescan C, Radzikowski L, Sprinkel AE, Heimberg H, Ahnfelt-

Access Status

This resource is publicly viewable.

Request this Resource

Request from a repository

Primary contributor: [Antibody Core \(Retired\)](#)
Co-contributed by:

- [Antibody Core \(USA\)](#)

Resource Tags

AbCore, antibody, Mouse, Polyclonal, Sez6l2

Login to edit tags

Read more about tags

Resource History & Actions

Approved on
Last modified on Jul 15, 2009

Login to edit or request an edit

Related resources**BCBC**

No matching resources

Other Consortia


No matching resources

Data courtesy of [dkCOIN](#). Only public resources are displayed.

Rønne J, Jensen J, Scharfmann R, Gradwohl G, Kaestner KH, Stoeckert C, Jensen JN, Madsen OD [Pancreatic islet and progenitor cell surface markers with cell sorting potential](#). (2012) *Diabetologia* **55**: 154-65 (Added December 19, 2012)

Comments

There are no comments for this entry.

 Login to add comments

[Home](#) · [Your Account](#) · [News & Events](#) · [Resources](#) · [Policies & Guidelines](#) · [About Us](#) · [FAQ](#) · [Site Map](#)

© 2002-2015 Beta Cell Biology Consortium - All Rights Reserved. [Terms of usage and disclaimer](#).

