

**My Account**

[Login](#)  
[Create Account](#)

**Resources**

[View All \(813\)](#)  
[Adenoviruses \(137\)](#)  
[Antibodies \(175\)](#)  
[Bioimages \(67\)](#)  
[Genomics Studies \(145\)](#)  
[mESC Lines \(68\)](#)  
[Mouse Strains \(120\)](#)  
[Miscellaneous \(46\)](#)  
[Protocols \(55\)](#)  
[Research Data \(4\)](#)  
[Resource Tags \(389\)](#)  
[Visualization \(9\)](#)

**Research & Cores**

[Core Facilities \(5\)](#)  
[Research Highlights \(5\)](#)  
[Research Networks](#)  
[Research Objectives](#)

**Information**

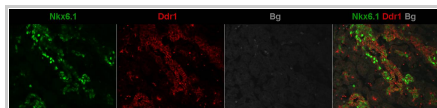
[About the BCBC](#)  
[BCBC Events](#)  
[Branding & Logos](#)  
[Career Opportunities](#)  
[Health](#)  
[NIH hESC Registry](#)  
[Policies & Guidelines](#)  
[Member Publications](#)  
[Research Programs](#)  
[Research Investigators](#)  
[Member Directory](#)  
[Tutorials](#)

**Polyclonal Human DDR1 raised in Goat - Antibody RES969****Antibody Information**

<b>Antibody ID:</b>	AB2541
<b>Antigen:</b>	DDR1 (NCBI Gene ID: <a href="#">780</a> )
<b>Type:</b>	Polyclonal
<b>Isotype:</b>	Not Applicable
<b>Immunogen Source:</b>	Purified Protein
<b>Raised In:</b>	Goat
<b>Peptide:</b>	<i>Not provided</i>
<b>Source of Antigen:</b>	Human
<b>Cross Reacts With:</b>	Mouse, Human
<b>Affinity Purified:</b>	Affinity Purified
<b>Purity Details:</b>	<i>Not provided</i>
<b>Positive Control:</b>	Mouse e15.5 pancreas
<b>Notes:</b>	Surface marker. Cell type: Mature endocrine cells - for details: <a href="http://www.betacell.org/research/highlights/MADBETA/">http://www.betacell.org/research/highlights/MADBETA/</a>

**Applications and Uses**

Application	Concentration	Storage Buffer	Protocols and Description
IHC-Fr	1:150, TSA	PBS	Description: For IHC Protocols:

**Associated Images****Image 1**

**Description:**  
Mouse e15.5 pancreas with Goat a-DDR1 (red) and Nkx6.1 (green).

**Reference:**  
Jacob Hald, Hagedorn Research Institute

**Repositories****R&D Systems**

[Request via \[www.rndsystems.com\]\(http://www.rndsystems.com\) website](#)
**Stock #:** AF2396  
**Availability Notes:** *Not provided*


**Contact Information****Preferred Contact**

<b>Name</b>	R&D Systems
<b>Institution</b>	<i>Not provided</i>
<b>Phone</b>	1-800-343-7475
<b>Email</b>	<a href="mailto:info@bio-technie.com">info@bio-technie.com</a>


**Associated Publications**

Publication	Citation
<a href="#">21947380</a>	Hald J, Galbo T, Rescan C, Radzikowski L, Sprinkel AE, Heimberg H, Ahnfelt-Rønne J, Jensen J, Scharfmann R, Gradwohl G, Kaestner KH, Stoeckert C, Jensen JN, Madsen OD <a href="#">Pancreatic islet and progenitor cell surface markers with cell sorting potential.</a> (2012) <i>Diabetologia</i> <b>55</b> : 154-65 (Added December 19, 2012)

**Access Status**

 This resource is publicly viewable.

**Request this Resource**


 Request from a repository


Primary contributor: [Antibody Core \(Retired\)](#)  
 Co-contributed by:  

- [Antibody Core \(USA\)](#)

**Resource Tags**

antibody, DDR1, example, Human, Polyclonal

 Login to edit tags

 Read more about tags

**Resource History & Actions**

Approved on  
 Last modified on Feb 06, 2012

 Login to edit or request an edit

**Related resources****BCBC**

*No matching resources*

**Other Consortia**

*No matching resources*


Data courtesy of [dkCOIN](#). Only public resources are displayed.

---

## Comments

---

*There are no comments for this entry.*

 [Login to add comments](#)

---

[Home](#) · [Your Account](#) · [News & Events](#) · [Resources](#) · [Policies & Guidelines](#) · [About Us](#) · [FAQ](#) · [Site Map](#)

© 2002-2015 Beta Cell Biology Consortium - All Rights Reserved. [Terms of usage and disclaimer.](#)

