

My Account

[Login](#)
[Create Account](#)

Resources

[View All \(813\)](#)
[Adenoviruses \(137\)](#)
[Antibodies \(175\)](#)
[Bioimages \(67\)](#)
[Genomics Studies \(145\)](#)
[mESC Lines \(68\)](#)
[Mouse Strains \(120\)](#)
[Miscellaneous \(46\)](#)
[Protocols \(55\)](#)
[Research Data \(4\)](#)
[Resource Tags \(389\)](#)
[Visualization \(9\)](#)

Research & Cores

[Core Facilities \(5\)](#)
[Research Highlights \(5\)](#)
[Research Networks](#)
[Research Objectives](#)

Information

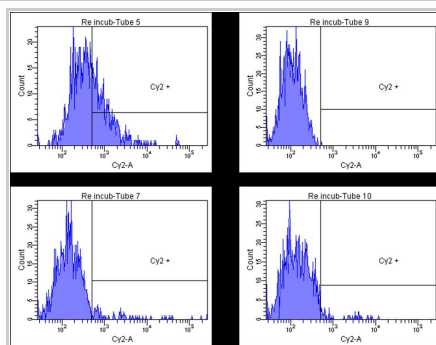
[About the BCBC](#)
[BCBC Events](#)
[Branding & Logos](#)
[Career Opportunities](#)
[Health](#)
[NIH hESC Registry](#)
[Policies & Guidelines](#)
[Member Publications](#)
[Research Programs](#)
[Research Investigators](#)
[Member Directory](#)
[Tutorials](#)

Monoclonal Human DDR1 raised in Mouse - Antibody RES970**Antibody Information**

Antibody ID:	AB2542
Antigen:	DDR1 (NCBI Gene ID: 780)
Type:	Monoclonal
Isotype:	IgG2a
Immunogen Source:	Purified Protein
Raised In:	Mouse
Peptide:	<i>Not provided</i>
Source of Antigen:	Human
Cross Reacts With:	Mouse, Human
Affinity Purified:	Purified
Purity Details:	Protein G purified
Positive Control:	mouse e15.5 pancreas
Notes:	Surface marker. Cell type: Mature endocrine cells

Applications and Uses

Application	Concentration	Storage Buffer	Protocols and Description
FACS	10 microgram/ml	PBS	Description: Dissociated mouse 15.5 pancreas cells. Protocols:

Associated Images**Image 1**

Description:
 Mouse a-DDR1 MAB2396 on dissociated mouse e15.5 pancreas cells. Tube 5: antiDdr1 1:50 (10ug/ml) and 2. ab-cy2 Tube 7: Control ab (10ug/ml) and 2. ab-cy2 Tube 9: no ab Tube 10: Only 2. ab-cy2

Reference:
 Jacob Hald, Hagedorn Research Institute


Repositories**R&D Systems**

[Request via \[www.rndsystems.com\]\(http://www.rndsystems.com\) website](#)
Stock #: MAB2396
Availability Notes: *Not provided*


Contact Information**Preferred Contact**

Name	R&D Systems
Institution	<i>Not provided</i>
Phone	1-800-343-7475
Email	info@bio-techne.com

Associated Publications**Access Status**

 This resource is publicly viewable.

Request this Resource

 Request from a repository


Primary contributor: [Antibody Core \(Retired\)](#)
 Co-contributed by:

- [Antibody Core \(USA\)](#)

Resource Tags

antibody, DDR1, Human, Monoclonal

 [Login to edit tags](#)

 [Read more about tags](#)

Resource History & Actions

Approved on
 Last modified on Feb 06, 2012

 [Login to edit or request an edit](#)

Related resources**BCBC**

No matching resources

Other Consortia

No matching resources


Data courtesy of [dkCOIN](#). Only public resources are displayed.

Publication Citation

[21947380](#) Hald J, Galbo T, Rescan C, Radzikowski L, Sprinkel AE, Heimberg H, Ahnfelt-Rønne J, Jensen J, Scharfmann R, Gradwohl G, Kaestner KH, Stoeckert C, Jensen JN, Madsen OD [Pancreatic islet and progenitor cell surface markers with cell sorting potential](#). (2012) *Diabetologia* **55**: 154-65 (Added December 19, 2012)

Comments

There are no comments for this entry.

 Login to add
comments

[Home](#) · [Your Account](#) · [News & Events](#) · [Resources](#) · [Policies & Guidelines](#) · [About Us](#) · [FAQ](#) · [Site Map](#)

© 2002-2015 Beta Cell Biology Consortium - All Rights Reserved. [Terms of usage and disclaimer](#).

