

My Account

[Login](#)
[Create Account](#)

Resources

[View All \(813\)](#)
[Adenoviruses \(137\)](#)
[Antibodies \(175\)](#)
[Bioimages \(67\)](#)
[Genomics Studies \(145\)](#)
[mESC Lines \(68\)](#)
[Mouse Strains \(120\)](#)
[Miscellaneous \(46\)](#)
[Protocols \(55\)](#)
[Research Data \(4\)](#)
[Resource Tags \(389\)](#)
[Visualization \(9\)](#)

Research & Cores

[Core Facilities \(5\)](#)
[Research Highlights \(5\)](#)
[Research Networks](#)
[Research Objectives](#)

Information

[About the BCBC](#)
[BCBC Events](#)
[Branding & Logos](#)
[Career Opportunities](#)
[Health](#)
[NIH hESC Registry](#)
[Policies & Guidelines](#)
[Member Publications](#)
[Research Programs](#)
[Research Investigators](#)
[Member Directory](#)
[Tutorials](#)

Polyclonal Mouse Gpr39-1a raised in Rabbit - Antibody RES971**Antibody Information**

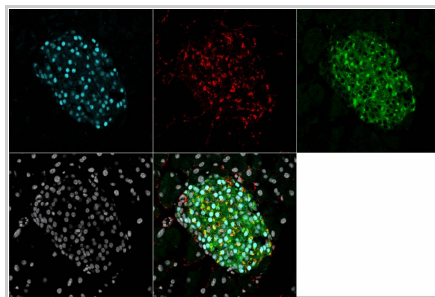
Antibody ID:	AB2543
Antigen:	Gpr39-1a (NCBI Gene ID: 71111)
Type:	Polyclonal
Isotype:	Not Applicable
Immunogen Source:	Peptide
Raised In:	Rabbit
Peptide:	aa 428-446 coupled to KLH
Source of Antigen:	Mouse
Cross Reacts With:	Mouse
Affinity Purified:	Serum
Purity Details:	<i>Not provided</i>
Positive Control:	Adult mouse pancreas
Notes:	<i>Not provided</i>

Applications and Uses

Application	Concentration	Storage Buffer	Protocols and Description
IHC	<i>Not provided</i>	<i>Not provided</i>	Description: <i>Not provided</i> Protocols:

Associated Images

Image 1



Description:
Adult mouse pancreas with rabbit a-Gpr39-1a 2491A (red), Pdx1 (blue) insulin (green) and DAPI.

Reference:
Jacob Hald, Hagedorn Research Institute

Repositories

BCBC members may [Login](#) to request this resource.

BCBC members may [Login](#) to request this resource.


Contact Information**Preferred Contact**

Name	Michael Ray
Institution	Vanderbilt University
Phone	(615)343-8258
Email	michael.ray@vanderbilt.edu


Associated Publications

Publication	Citation
19213833	Holst B, Egerod KL, Jin C, Petersen PS, Østergaard MV, Hald J, Sprinkel AM, Størling J, Mandrup-Poulsen T, Holst JJ, Thams P, Orskov C, Wierup N, Sundler F, Madsen OD, Schwartz TW G protein-coupled receptor 39 deficiency

Access Status

 This resource is publicly viewable.

Request this Resource


 Request from a repository


Primary contributor: [Antibody Core \(Retired\)](#)
Co-contributed by:

- [Antibody Core \(USA\)](#)

Resource Tags


AbCore, antibody, Gpr39-1a, Mouse, Polyclonal

 Login to edit tags

 Read more about tags

Resource History & Actions

Approved on
Last modified on Jul 15, 2009

 Login to edit or request an edit

Related resources**BCBC**

No matching resources

Other Consortia


No matching resources

Data courtesy of [dkCOIN](#). Only public resources are displayed.

is associated with pancreatic islet dysfunction. (2009) *Endocrinology* **150**: 2577-85 (Added November 29, 2012)

Comments

There are no comments for this entry.

 Login to add
comments

[Home](#) · [Your Account](#) · [News & Events](#) · [Resources](#) · [Policies & Guidelines](#) · [About Us](#) · [FAQ](#) · [Site Map](#)

© 2002-2015 Beta Cell Biology Consortium - All Rights Reserved. [Terms of usage and disclaimer.](#)

